

# NeighbORUST

*Reintroduce the potential of a Strong Community*

*Empower inhabitants of Orust*

*Reach a sustainable future*

*Inspire people and Give them tools to*

*Enhance sharing within their community*



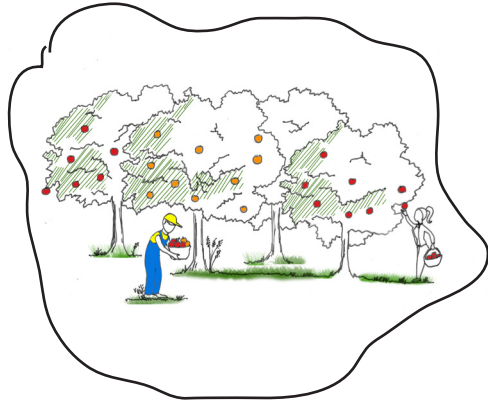
# ORUST IN 50 YEARS...

When I turned 8, Orust started to change. At that time I didn't really understand the reasons behind, but I loved the new places which were created and especially "Knowledge on Wheels"! The question of sustainable development became more clear after the years, and quite normal as I grew up.

I was going to the "Tavlebord Productive Center" every Wednesday after school, with my grandparents. At that time it was new. The only building was the community kitchen with the greenhouse. My grandparents enjoyed fika with some retired friends, sitting in the main room or on a bench between the plants in the greenhouse, while I was watering the berry bushes or checking the evolution of my adopted apple tree.



GUSTAV



Sometimes on weekends, we used to go to the “Månsemyr Resource Center”. In the beginning we just left some things we didn’t need anymore at home. But when my sister entered primary school, a friend of her got a desk from the resource center. She was so proud to have painted it by herself. So we went there to build one too with the whole family. Since then, we started going there regularly, to help other classmates to build something, or just to read and discover new techniques in the book and material library.

We were always so excited when “Knowledge on Wheels” came to our village. It wasn’t a big event every time, but they always had an activity for us. I remember this one time, when we painted the truck with an artist. A big tree, with leaves that were the handprints of all the children of Orust, reminder of the future citizens of the island, and they are still on it! We learned a lot about water saving, how to build our future house, or improve the one of our parents. I think we played an important role in the changes towards sustainability, by convincing our parents to do something for our future.

Nowadays, I still go to these places. Some new community gardens were created and a lot of new workshops, since so many people wanted to be part of it. Surprisingly, my kids are continuously coming with new ideas and things they learned at “Knowledge on Wheels” : we should never stop the effort to keep our planet safe!





# CONTENTS

Part 1 :	
General analysis	7
- Background of our work	8
- Glossary	9
- Background analysis	10
- Strategies	11
- Examples of sharing communities	12
Part 2 :	
Analysis of the existing context of Orust	15
- Steps of the analysis	16
- Outcomes of the analysis	16
Part 3 :	
NeighbORUST - From a fragmented community to a sharing island	21
- Common concept	22
- Presentation of the different characters in the stories	24
- Knowledge on wheels	
<i>Shared skills and activities moving around</i>	26
- Månsemyr resource center	
<i>Shared garden and gathering spaces</i>	34
- Tavlebord productive center	
<i>Shared materials and working spaces</i>	44



Part 1

General analysis

# BACKGROUND OF OUR WORK

*“Climate change is now affecting every country on every continent. It is disrupting national economies and affecting lives, costing people, communities and countries dearly today and even more tomorrow.*

*People are experiencing the significant impacts of climate change, which include changing weather patterns, rising sea level, and more extreme weather events. The greenhouse gas emissions from human activities are driving climate change and continue to rise. They are now at their highest levels in history. Without action, the world’s average surface temperature is projected to rise over the 21st century and is likely to surpass three degrees Celsius this century—with some areas of the world expected to warm even more. The poorest and most vulnerable people are being affected the most.*

*Affordable, scalable solutions are now available to enable countries to leapfrog to cleaner, more resilient economies. The pace of change is quickening as more people are turning to renewable energy and a range of other measures that will reduce emissions and increase adaptation efforts.”*

<http://www.un.org/sustainabledevelopment/climatechange/> (2017-11-27)

As the shift has to be taken quickly, the challenge nowadays is to raise the awareness of as many people as possible. By the definition, sustainable development includes three aspects: ecology, economy and social. The last one is too often left behind the two others, despite the fact that the biggest impact can be done by everyone of us if we join our forces. This project is targeting especially the social sustainability. Therefore the focus is on the everyday habits which have to change to achieve a sustainable lifestyle. It doesn't mean to give up our comfort, but find another way.

In our modern societies where individualization is a dominating trend, the gap between everyday habits and sustainable everyday life is increasing. Today the need for a transition to a more sustainable lifestyle is greater than ever. Many new projects have been designed for the transition to sustainable future in Denmark, Germany, Netherlands. It is inspired by old values, where the most important one is to increase the sharing of resources in the community. It increases the dependence on one-another, but not in a disadvantageous way. Having more personal relations between people also mean, to have more support when you need it, not being alone to face problems. Sharing is a way to connect with other people, and it includes several aspects:

The first one is sharing physical objects to consume less resources. For example sharing machines, cars or tools which are not needed every day. Therefore generating less waste, if somebody doesn't need a table anymore, he can give it to somebody else.

The second one is sharing skills and expertise, because everyone can benefit from new knowledge, the idea is not to be in competition, but to help and inspire each other to a more sustainable way of living. In a community every person with one's knowledge and experience is a valuable asset. Without any hierarchy every skill is useful from cleaning and cooking to carpentry and electrical.



# GLOSSARY : Social sustainability

*“The ability of a community to develop processes and structures which not only meet the needs of its current members but also support the ability of future generations to maintain a healthy community.”*

<http://www.businessdictionary.com/definition/social-sustainability.html> (2017-11-27)

*“Social Sustainability is: a positive condition within communities, and a process within communities that can achieve that condition.”*

Stephen McKenzie 2004 Hawke Research Institute Working Paper Series No 27  
SOCIAL SUSTAINABILITY: TOWARDS SOME DEFINITIONS. Hawke Research Institute,  
University of South Australia, Magill, South Australia (2017-11-27)

*“Social sustainability is a quality of societies. It signifies the nature-society relationships, mediated by work, as well as relationships within the society. Social sustainability is given, if work within a society and the related institutional arrangements:*

- satisfy an extended set of human needs*
- are shaped in a way that nature and its reproductive capabilities are preserved over a long period of time and the normative claims of social justice, human dignity and participation are fulfilled.”*

Beate Littig, Erich Griessler 2005 Social sustainability: a catchword between political pragmatism and social theory, International Journal of Sustainable Development  
8(1-2):65-79, p 72 (2017-11-27)

# BACKGROUND ANALYSIS

A common background analysis was made by the entire class, to establish a SWOT which is a list of strengths, weaknesses, opportunities and threats on Orust. In our project, we have chosen to focus on the following ones :

<p><b>Strengths</b></p> <ul style="list-style-type: none"> <li>- Closeness to a diverse landscape and rich biodiversity (in terms of both leisure and resource qualities)</li> <li>- A large local engagement and many local associations in active local networks</li> <li>- Suitable land and sea for local food and energy production (An asset for both local economy and self sufficiency)</li> <li>- Local craftsmanship</li> </ul>	<p><b>Weaknesses:</b></p> <ul style="list-style-type: none"> <li>- Big difference between summer and winter (in terms of services, activities, liveliness and spatial quality)</li> <li>- Lack of meeting places, public facilities and public space.</li> <li>- Lack of culture and activities in winter (young and elderly)</li> <li>- Gap between east and west / permanent and temporary inhabitants of Orust</li> <li>- Centralisation to Henån</li> </ul>
<p><b>Opportunities:</b></p> <ul style="list-style-type: none"> <li>- Increased environmental awareness</li> <li>- Circular economy in local networks</li> <li>- renewable energy production</li> </ul>	<p><b>Threats:</b></p> <ul style="list-style-type: none"> <li>- Individualization</li> <li>- Ageing population</li> <li>- Main land dependency</li> <li>- Cultural gaps (Us-them/East-west/Summer-winter/ Temporary-permanent)</li> </ul>

## SWOT : strengths, weaknesses, opportunities and threats

One way to work with the SWOT is to balance the weaknesses with the opportunities:

- The difference between summer and winter can be an opportunity for multiple activities in different locations in our projects.
- The lack of cultural and social activities during winter can be dealt with by creating local events in the right place at the right time.

Another way to work with it is to balance threats with strengths, for example:

- Increasing personal responsibility and involvement is a good use of the individualization trend.
- Cultural gaps can lead to a diversity that could enrich the community experience.

The common background analysis led us to 14 objectives. Our project aims directly at 6 of them :

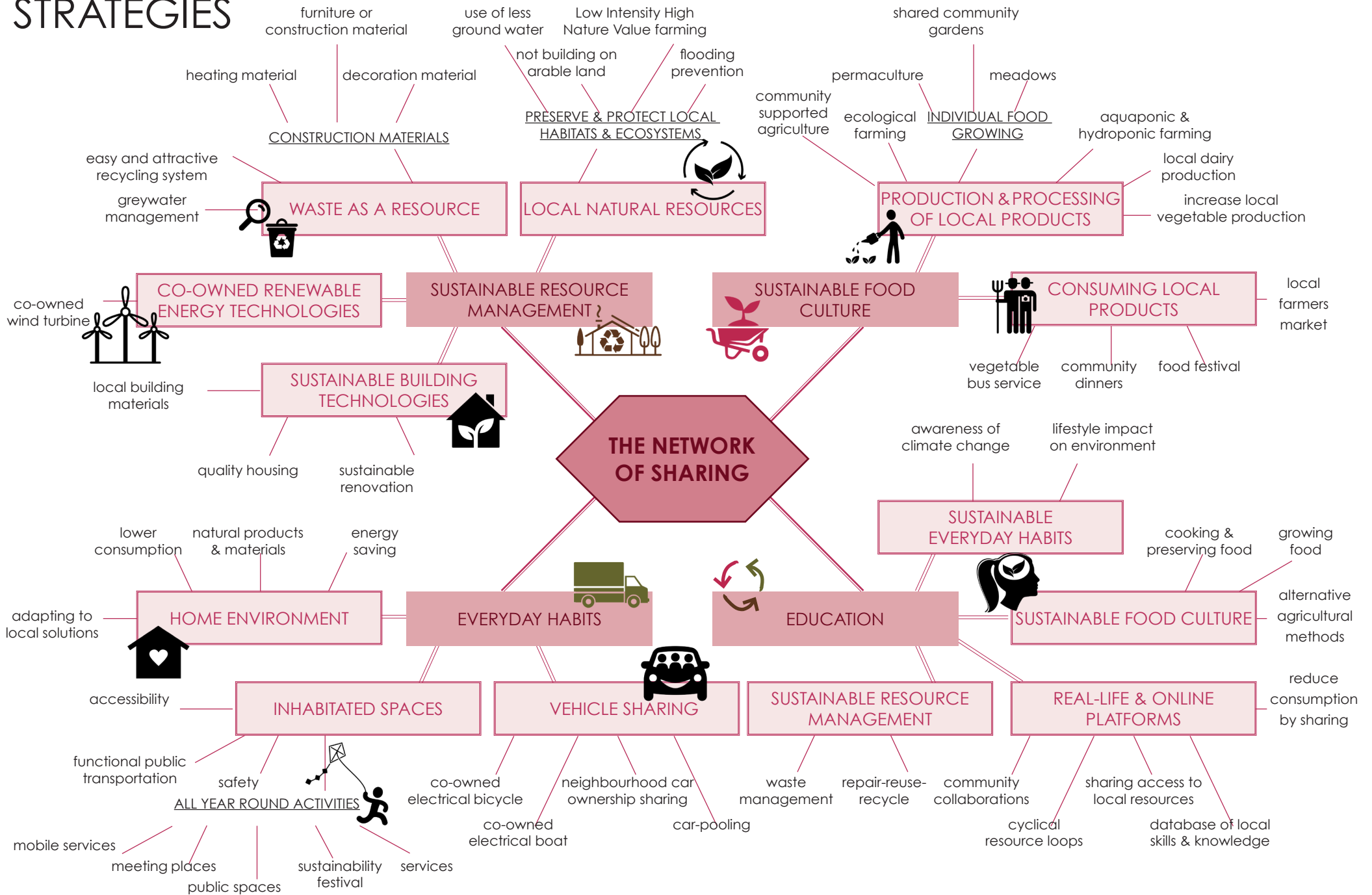
- Orust is an interesting and active place to live in for people in all different stages in life.
- Orust is an island with several centres. Each containing public spaces, services and meeting places for everybody all year round.
- Activities build social networks and relationships which leads to the strong community feeling.
- Local residents have a sustainable lifestyle and are aware and well informed about environmental and local issues.
- Orust offers local job opportunities connected to the sustainable redevelopment of traditional local industries. (e.g. fishing, agriculture and craftsmanship)
- Preservation of nature.

And 5 others are included as secondary objectives :

- All the new built development is climate safe, built and run with local resources.
- Materials are produced, used and reused locally.
- On Orust all actors (tourism, local businesses, energy and food production) contribute to a sustainable local economy.
- As much as possible of food consumed is locally and organically produced.
- Eco-tourism and developed eco-village movement makes Orust a model within sustainability.

These objectives helped the class to define some common working strategies for Orust. With this base, we could draw this diagram to show how we relate our strategies to the main idea of sharing. All the elements around have been included in our project, either as a main focus or as secondary component.

# STRATEGIES



# EXAMPLES OF SHARING COMMUNITIES



TITLE **SAMSØ ENERGY ACADEMY**  
 AUTHOR / SOURCE association / [www.energiakademiet.dk](http://www.energiakademiet.dk)  
 LOCATION / TIME Samsø, Denmark / 2007 - ...

- RELEVANCE
- community power & sustainable development
  - driven by community initiatives, meeting place for all the associations of the island
  - platform & place for people to come together, learn renewable energy techniques & collaborate
  - 9 staff members, organising workshops, lectures, tours
  - guests: politicians, ambassadors, officials, journalists, researchers, school classes & private individuals



TITLE **SVANHOLM ECOVILLAGE**  
 AUTHOR / SOURCE 2 families initiated the project / [www.svanholm.dk](http://www.svanholm.dk)  
 LOCATION / TIME Svanholm / 1978 - ...

- RELEVANCE
- now about 100 members
  - 30-years commitment to shared economy
  - organic food production & animal farming
  - common collective ideals: concerning ecology, income sharing, communal living, Self Government & consensus decision making
  - example of economic self-sustainability
  - members are responsible to take part in work-groups



TITLE **MAKVÆRKET CULTURAL & ENVIRONMENTAL COLLECTIVE**  
 AUTHOR / SOURCE volunteers / [www.makvaerket.wordpress.com](http://www.makvaerket.wordpress.com)  
 LOCATION / TIME Holbæk, Denmark / 2008 - ...

- RELEVANCE
- refusing individualism, aims to be non-hierarchical & egalitarian space constantly learning & renewing itself
  - open workshops to learn building with recycled & local natural materials, designing permaculture garden & cooking vegetarian food with neighbours
  - confronting our waste & consumption, implementing growing gardens, alternative heating & energy sources, sharing knowledge & learning practical skills

TITLE **BETTER BLOCK**

AUTHOR / SOURCE founder Jason Roberts / [www.betterblock.org](http://www.betterblock.org)  
LOCATION / TIME worldwide / 2010 - ...

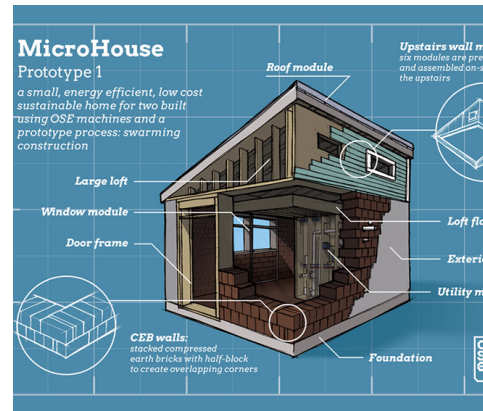
- RELEVANCE
- non-profit organisation that educates, equips & empowers communities & their leaders to reshape & reactivate built environments to promote the growth of healthy & vibrant neighborhoods
  - develop use of open-source media, give input & information, employing charrettes, organise neighborhood meetings & workshops with residents, stakeholders to enhance public life & cooperations



TITLE **OPEN SOURCE ECOLOGY**

AUTHOR / SOURCE Marcin Jakubowski / [www.opensourceecology.org](http://www.opensourceecology.org)  
LOCATION / TIME worldwide / 2003 - ...

- RELEVANCE
- non-profit open source project
  - freedom starts with peoples' individual ability to use natural resources to free themselves from material constraints – to unleash human potential
  - producing open source blueprints (agricultural machinery, building systems) to decentralise production & build modern prosperity in local economies



TITLE **FAIRCOOP**

AUTHOR / SOURCE volunteers / [www.fair.coop](http://www.fair.coop)  
LOCATION / TIME worldwide / 2014 - ...

- RELEVANCE
- to create an innovative glocal economic system for a collective change towards a life in common
  - a global network of self-organized & self-empowered local communities & individuals, independent of centralized forces & restrictions
  - learning from previous experiences towards greater sustainability, self-management, permaculture & alternative autonomous currency systems





## Part 2

Analysis of the existing context  
of Orust

# STEPS OF THE ANALYSIS

The first visit to Orust was in September, for one week. To analyse the whole Island the class was divided between five areas and five topics: To settle on Orust, To make a living on Orust, To move around in/to and from Orust, To grow up, live and get old on Orust, To survive in a long term perspective on Orust. After the common background analysis (explained in the first part) we decided to focus on the networks already existing on Orust to enhance the feeling of being an active member of a future sustainable Orust.

After some interviews (with farmers, politicians, associations,...) we got the impression of the lack of a community bonding. Young people are moving out of Orust. There are not enough all year round meeting places and very few activities during the winter for the people who live there permanently. Although, there are networks and activities happening in some parts of the Island, they are locally based and not well-known by the community. This is due to a lack of communication and because of limits to move around the island for younger or older people without private transportation.

We went back for two days during October, to complete our first work, with some more meetings, focusing on the places and themes we wanted to work on.

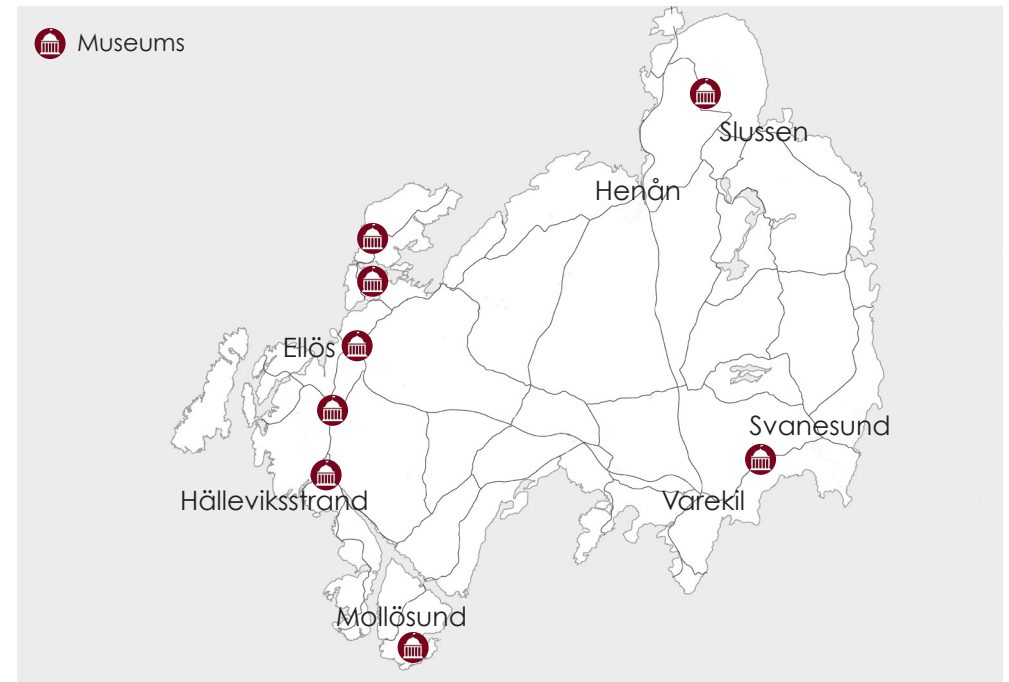
According to the interviews, the municipality's website, and the different associations internet pages, we mapped the activities and networks. In some cases we could find existing links between them, for instance the food nodes working with several farmers. Mainly there were no regular cooperations between the associations and interest groups of same type. It looks like the nodes are just for the place they are located at and have no clear relation with similar that appear in different places.

# OUTCOMES OF THE ANALYSIS

Based on the analysis of the maps, interviews and pictures, we can see that Orust has numerous summer activities and associations spread out all over the island. Regrettably there are not many strong supporting relations between them as well as, there is not much communication in some cases, which bring us to the conclusion of a fragmented community.

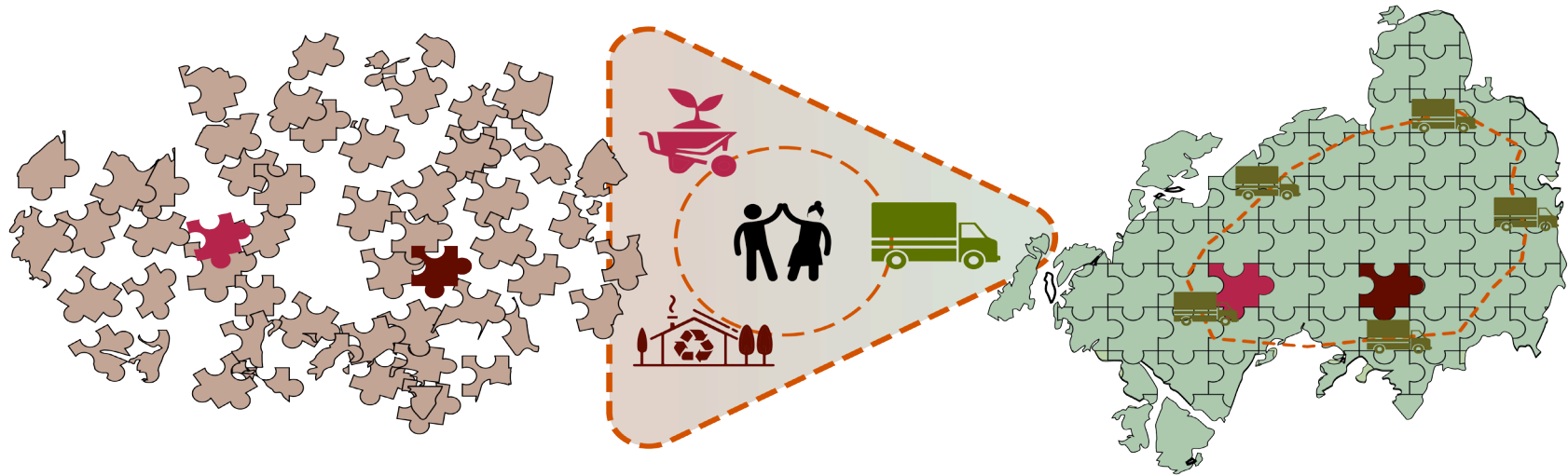
We represented these separated pieces of Orust on the opposite diagram. These could be assembled again through involved people which take over our three propositions as they need it and go even further according to their wishes.

## History of Orust is exhibited in several museums

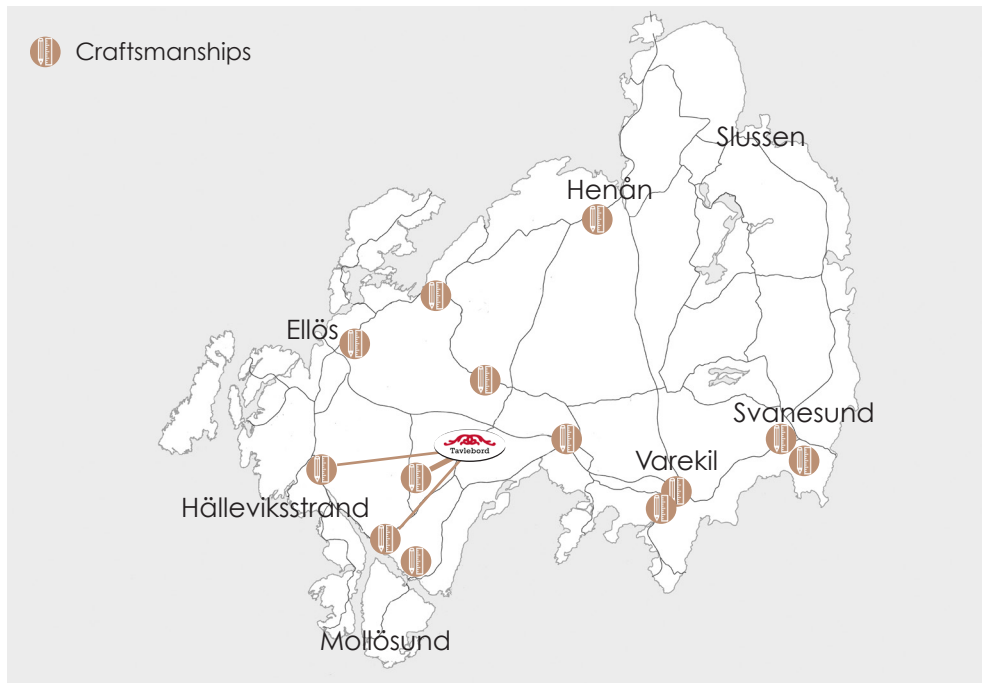




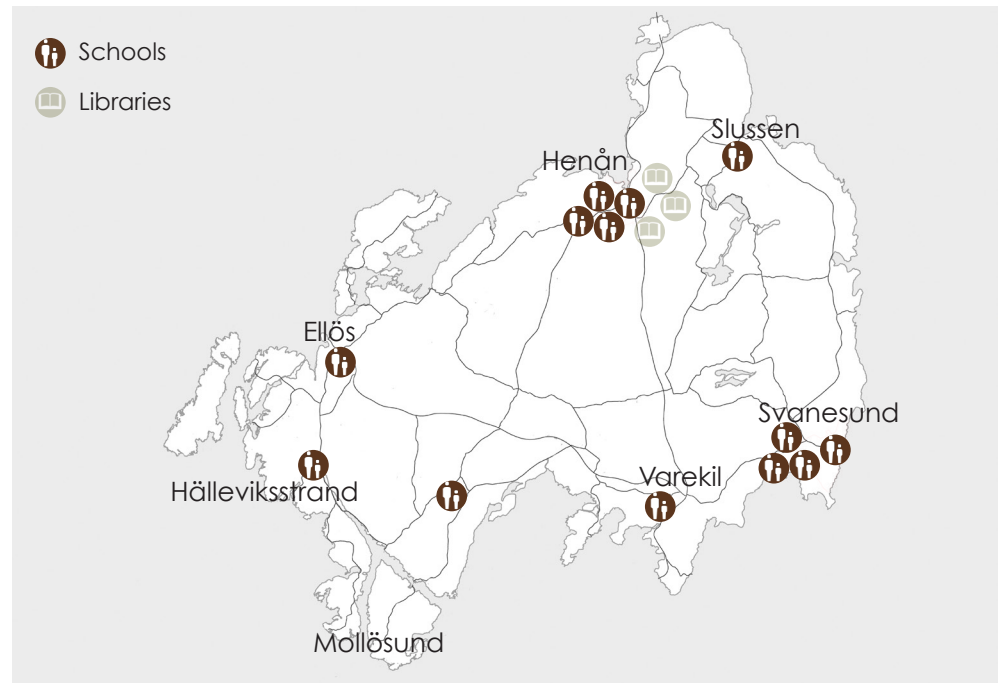
## Diagram - Fragmented communities to a sharing Island



## Valuable craftsmanship of Orust

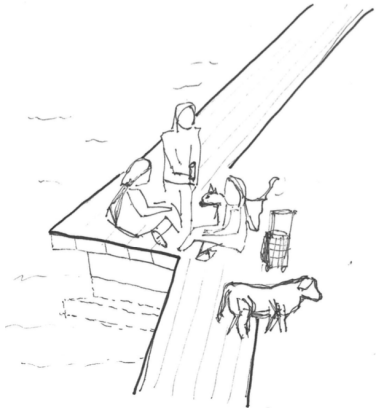


## Libraries, primary and elementary schools



# OUTCOMES OF THE ANALYSIS

Henån on a sunny september day



"We don't gather, because we don't have a place for it."  
 "if you don't go to the church, you don't have a place to gather."

Inhabitant of Myckleby

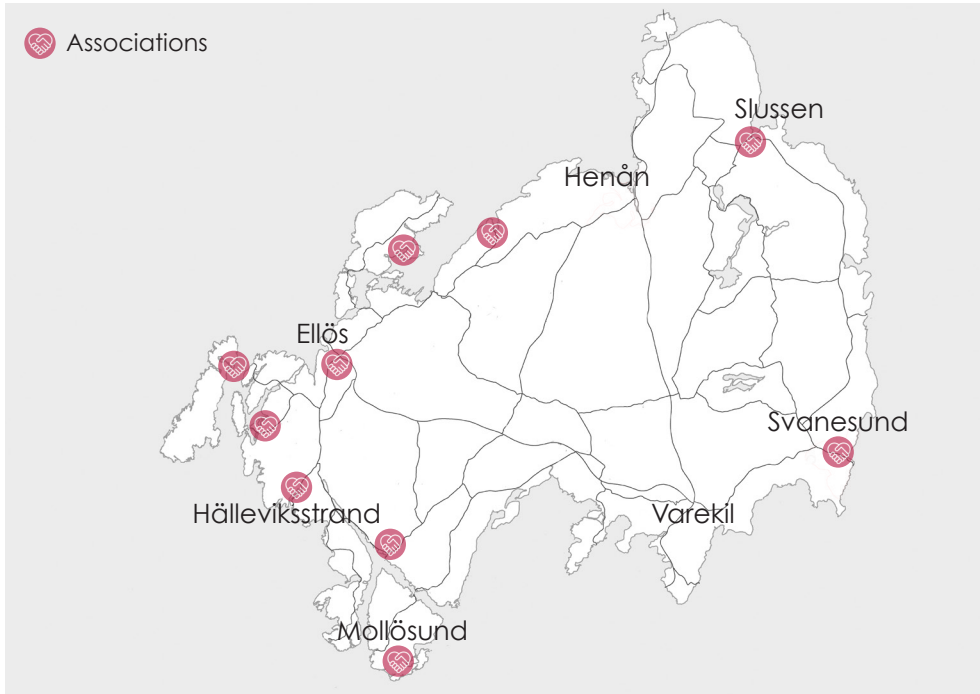
Orust a municipality made of many different sized Islands



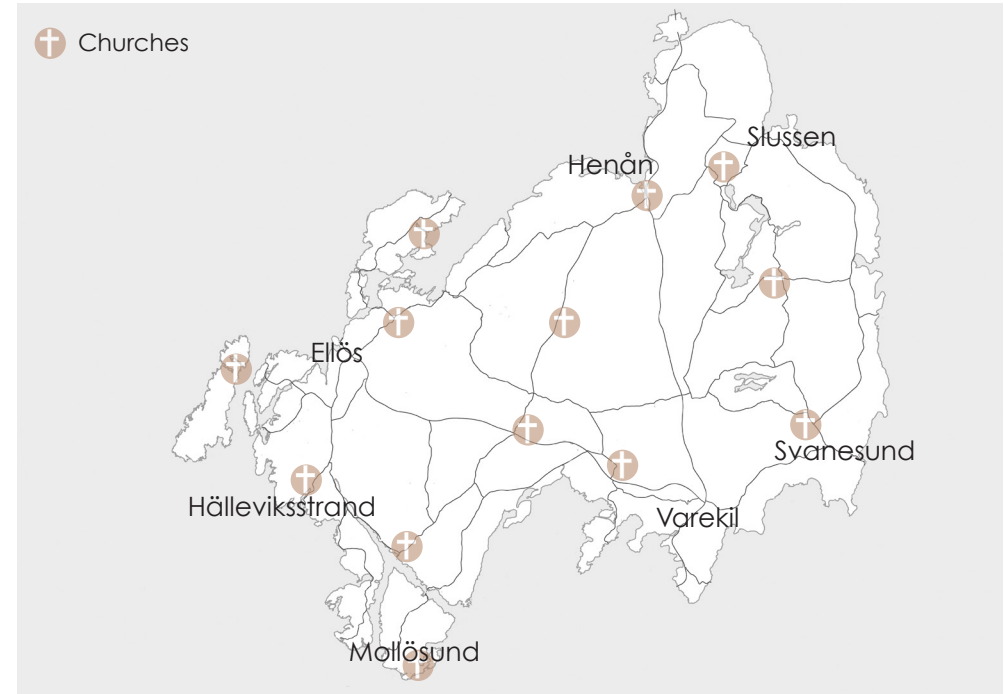
"In winter, sometimes we go to Uddevalla in the mall just to walk somewhere inside."  
 "We never heard about this event, what is it about? [about an event of the Kretsloppsakademi]"

Inhabitant of Hällviksstrand

Several associations on Orust



A large number of churches on Orust



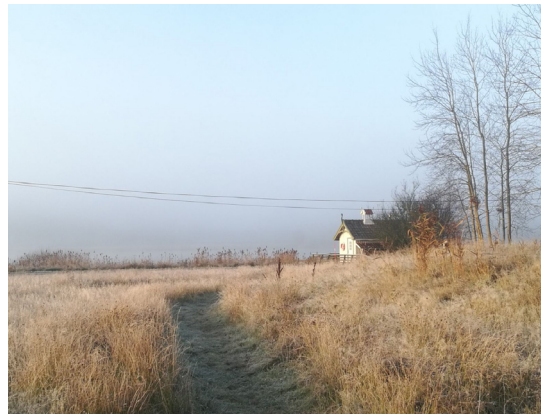
Dense housing creates shared paths



"We are a group of farmers and we meet one time every month."

Inhabitant of Myckleby

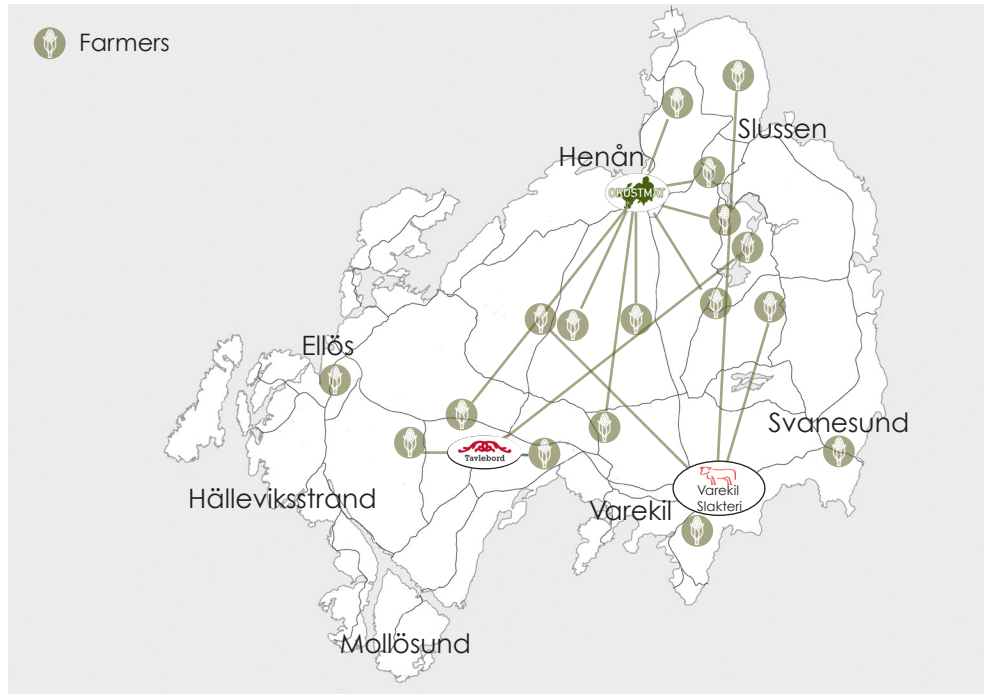
Shared sauna at Utsikten's ecovillage



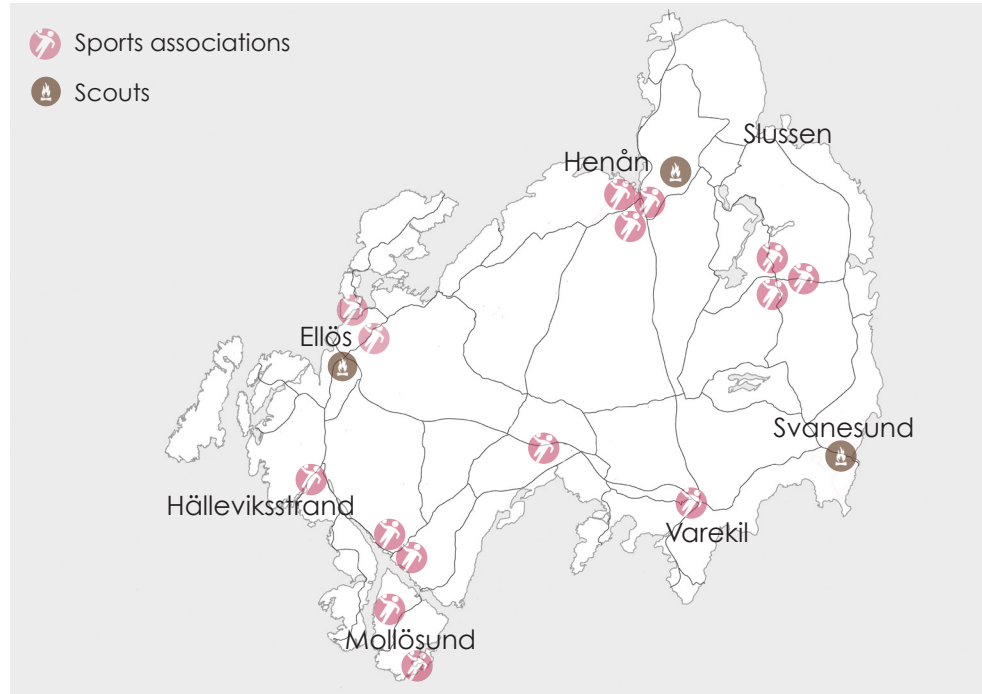
"We need a place to reuse things, before it is considered as a waste here in the recycling center. Some people really like to spend time and socialise here."

Månsemyr Recycling center

An important network between farmers and inhabitants



Diverse sport and scout associations





## Part 3

NeighbORUST

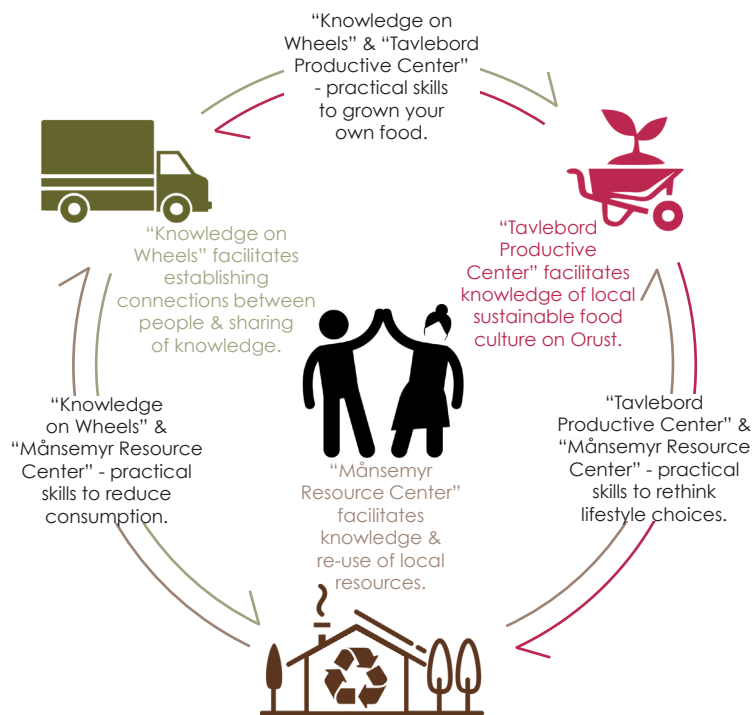
From a fragmented community  
to a sharing island

# COMMON CONCEPT

**Rebuild the fragmented community to reintroduce the potential of a strong community.**

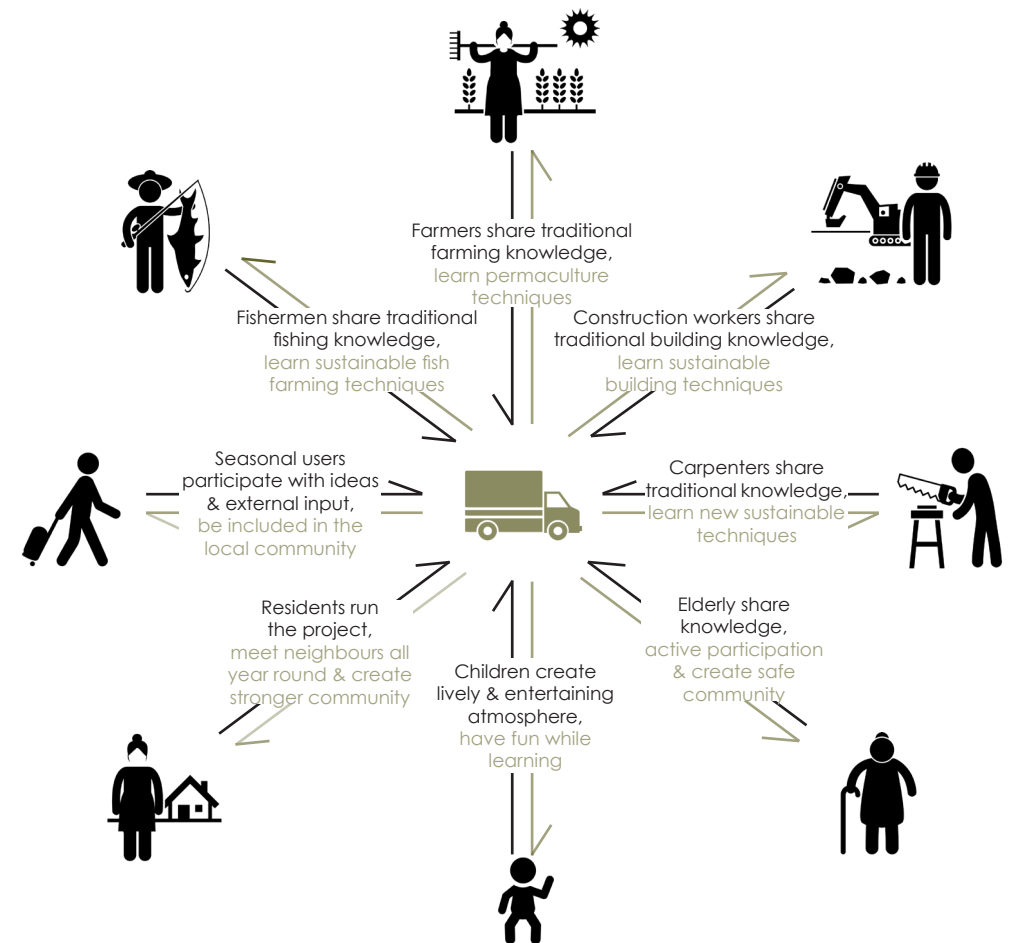
The project empowers the existing networks and strengthens the sharing in everyday lives, by proposing two kind of interventions. The first one is to initiate two community activity places on Orust: the "Månsemyr Resource Center" and the "Tavlebord Productive Center". The second is to introduce a mobile event to enhance the connection between the existing places while spreading knowledge about sustainable development: "Knowledge on Wheels".

The four following diagrams show the different kind of interactions between the people and our interventions.



Global interactions

The main difference between the two kind of interventions is that one is coming to the people, to increase the amount of activities in each community, and the other which contains two different projects are placed on specific locations. The idea is to decentralize the activities, since most of the all year round activities have been located in Henån.



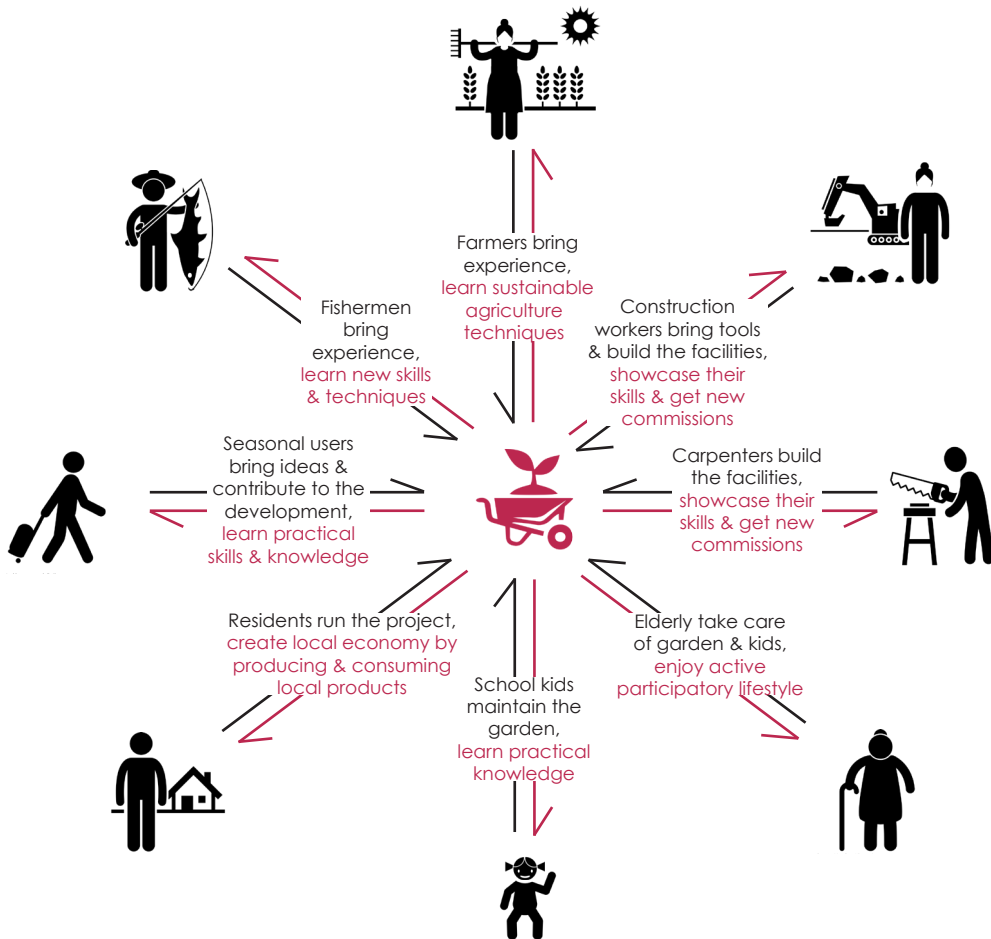
"Knowledge on Wheels"

Our analysis of the existing networks and the current situation on Orust, brought us to the same kind of resolution for two very different topics : food and waste. The logic is to have a place where you can find information and gain more knowledge through : exchanges with other people, books, built examples, meeting other inhabitants of Orust.

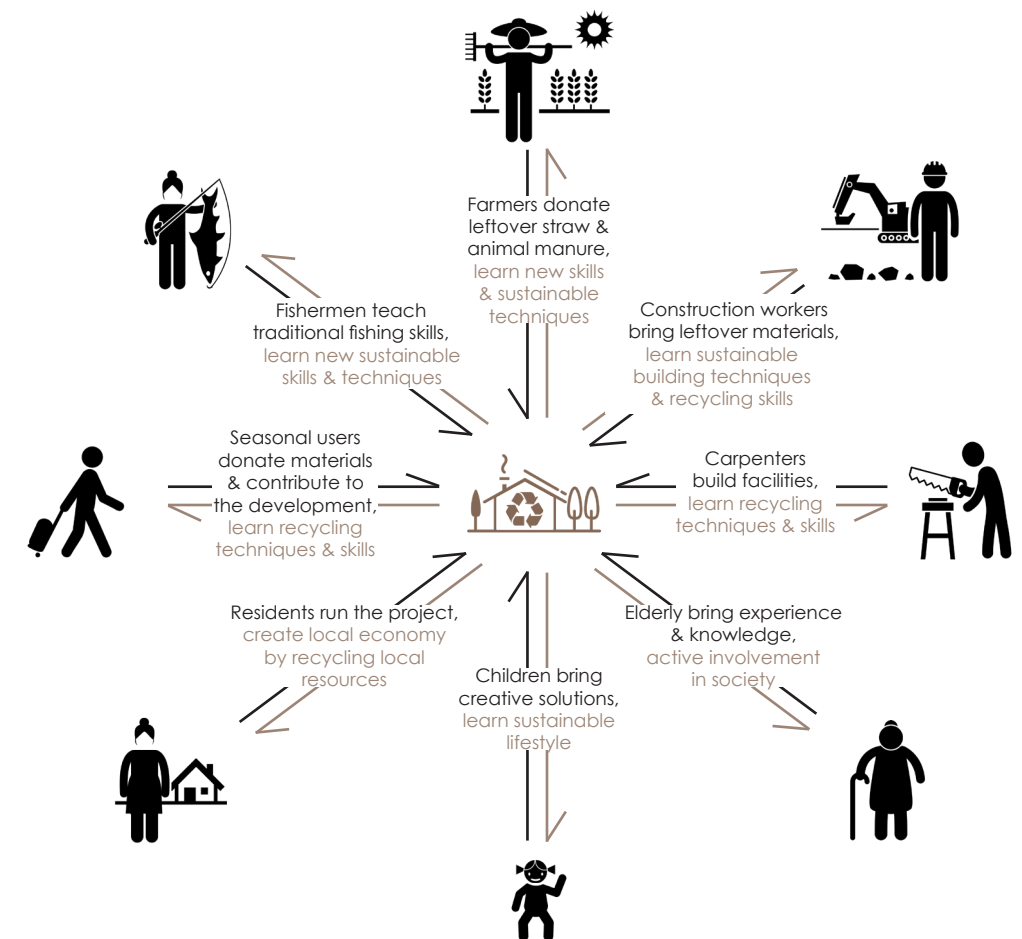
These exchanges will not only happen during summertime, but all year round with an indoor space made available locally for activities. So, the common basis is : SHARING and GATHERING.

It is possible to share a lot of things. Sharing enables to put things to a new creative use and increase their subjective value. It can be the exchange of objects you don't need more than few times a year or share food leftovers. It can also be a favor to someone. Helping someone because you have more knowledge in that specific field and get helped in return when you face a problem he or she can help with.

**Social contracts based on trust and sharing contribute to a more resilient society.**



“Tavlebord Productive Center”



“Månsemyr Resource Center”

# PRESENTATION OF THE DIFFERENT CHARACTERS IN THE STORIES

Many stories will be told to explain what kind of future is achievable through the shared activities, objects and services between our proposed communities. Some take place in a close future and others in a more long term perspective. All these stories are possible and not just utopian dreams if we start the change towards a sustainable future for the next generations.

We will meet some characters several times, maybe you can identify yourself to them. Can you find them all ?

I really like the garden at the farm. The chickens just moved in! They scared me at first but when I gave them food they were nice. I also have Carl there! It is my apple tree, I love him! Last time mom baked a blueberry pie we ate with the other kids. It was super good!

Gustav is 10 years old. He is going to school in Henån. He is a very playful and curious child. When he goes to the “Månsemyr Resource Center” he spends most of his time asking questions from grown-ups that are working there. He is quite energetic too and loves running in Tavlebord’s garden. He was one of the first person to adopt an apple tree and he is very proud of it.

I met a lovely farmer at “Tavlebord Productive Center”. He gave me some animal manure he was planning to throw away. I use it to grow my own vegetables! To thank him I cooked my grandmother’s apple pie in the community kitchen, I even gave him the secret recipe. Since then we are good friends!

Annika is a 45 year-old engineer. She was born and raised on Orust and moved to Göteborg to study. After sometime she came back looking for peace and serenity Orust can offer. She got interested in “Tavlebord Productive Center” because she wanted to learn to grow vegetables in her backyard. There she made friends and learnt what she was looking for!

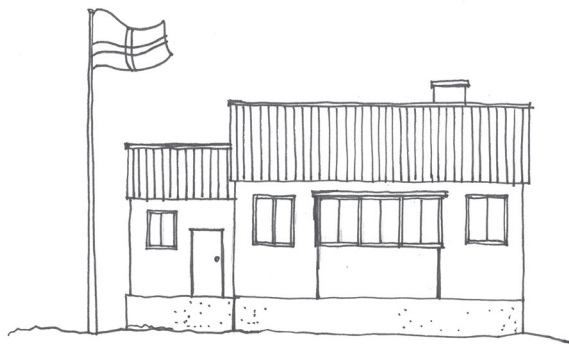
GUSTAV



ANNIKA







EDGAR



Last week my friend at the Månsemyr recycling station called me asking about plumbing. I went there and discovered the “Månsemyr Ressource Center” This place is amazing! I showed a few kids how to fix a leaking faucet. I’m definitely going back there again!.

Edgar is 65. He is a retired mechanic. He basically knows everything about cars but also expanded his knowledge of building. Everything he can do himself he does. Edgar is helpful and eager to share. He would never say no to anyone who needs a hand. He is also involved in associations since he heard of them on Orust.



ELSA



I heard about “Knowledge on Wheels” when the project was still being discussed. At the time I was just starting to discover about sustainable ways of living. So I went to the municipality to help push the project forward. Now it has been two years I enjoy touring with the truck and telling people what I’ve learned.

Elsa is 23. She is studying economy in Göteborg. When she was younger she used to go to Orust for summer holidays. Even though her parents don’t go anymore she spends most of her summer and weekends organizing and facilitating the “Knowledge on Wheels” tour. She is really good at entertaining children while teaching them sustainable habits to interact with their environment.

# **KNOWLEDGE ON WHEELS** - shared skills and activities moving around

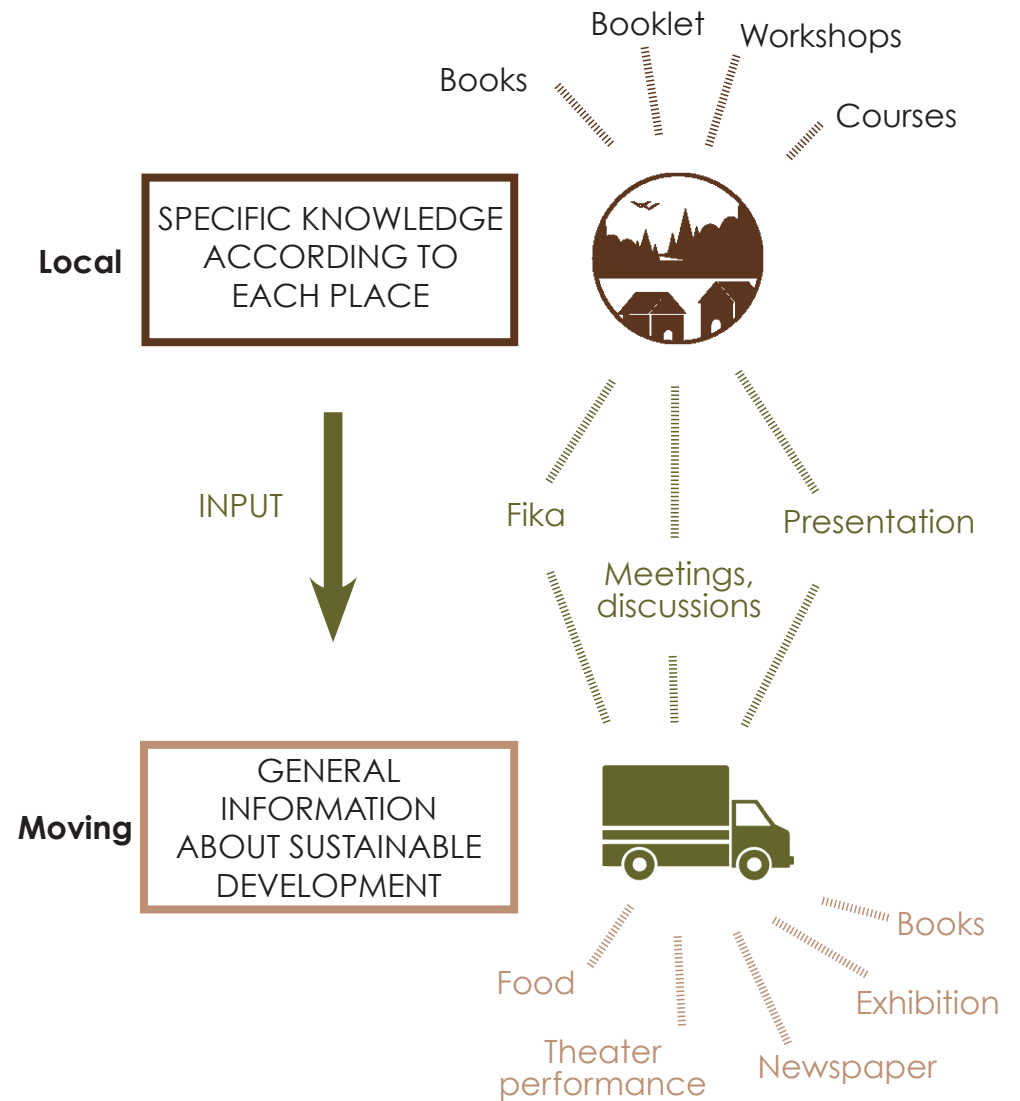
To raise awareness about climate change and the shift we have to take to reach a sustainable future, we promote the creation of an event where people can find the information and means to make the change in their everyday lives. For example: water saving, energy use and production, heating, food production and its origin, sustainable transportation, building with local natural materials, etc. The second purpose is to create more activities all year round, so the focus isn't only on tourists but also on the 15 000 permanent inhabitants.

We want this event to be mobile for two reasons. First of all because we noticed a lack of communication and information between the different networks and places on Orust. "Knowledge on Wheels" will go to the different communities so it will reach more people. The second benefit of bringing this event to the different parts of Orust is to allow older and younger generation to be part of it, without the need of a car.

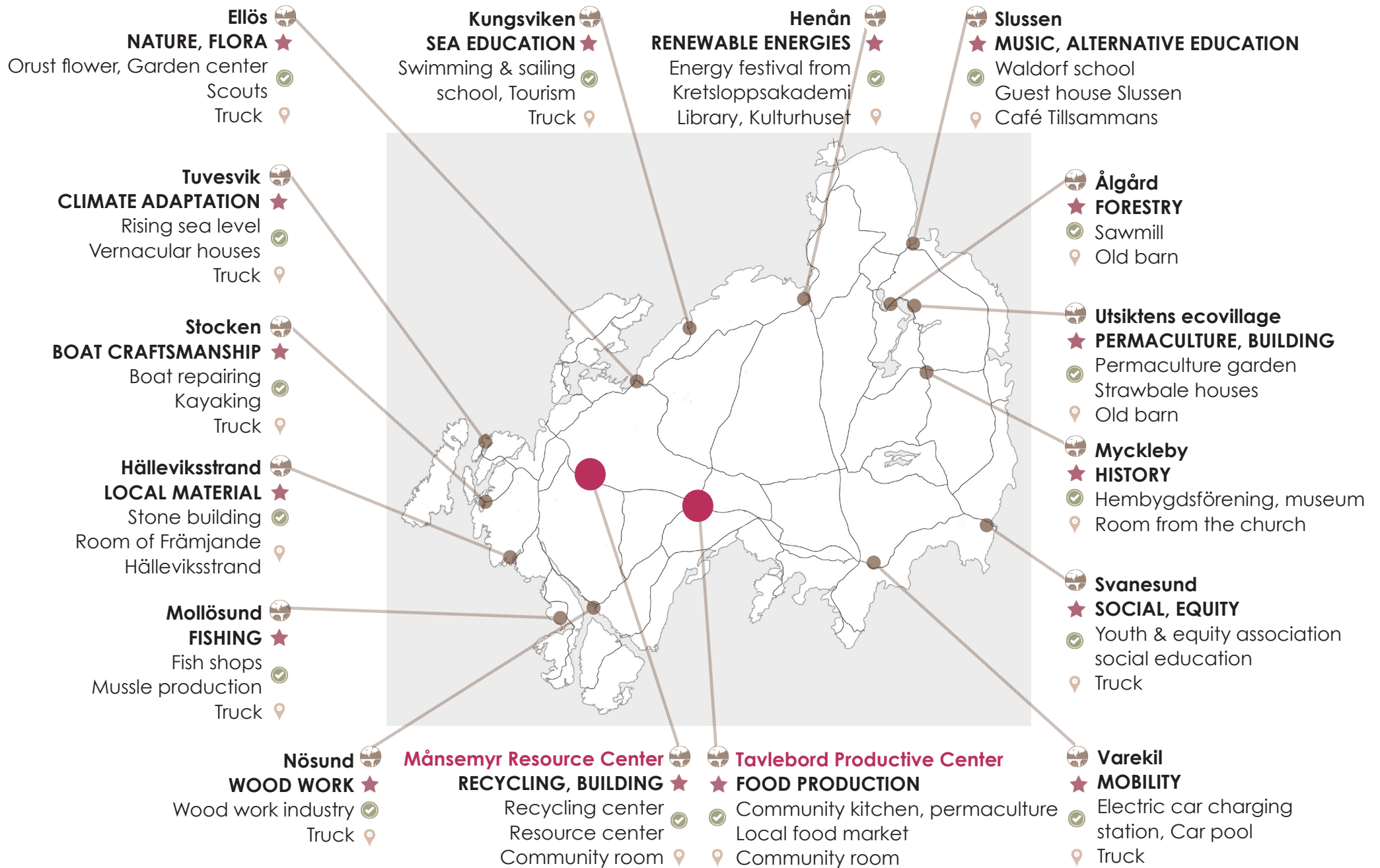
In addition to the general awareness of sustainable development, it is very important to recognize the local expertise and context. So "Knowledge on Wheels" will get a specific input according to the knowledge and skills of each place and invite the other communities of the island to take part of it. The events will enable connections for exchanging information and participation between different points. For instance: the skills gained from permaculture in the ecovillage will improve the "Tavlebord Productive Center". Or experience in working with wood at Ålgård will improve the reuse of wood at the "Månsemyr Resource Center".

*(See the opposite diagram for the activities and the opposite map with the specific qualities ★ of each place)*

The first investment to buy the truck needs to be done either by financial support from the Municipality of Orust or crowdfunding. The low cost of inviting the truck to the small communities is covered by crowdfunding, public funding (EU, governmental grants, etc) or partially by the local community. The drivers of the truck could be part of a team of entrepreneurs and people involved (fx Kretsloppsakademi), and some volunteers.



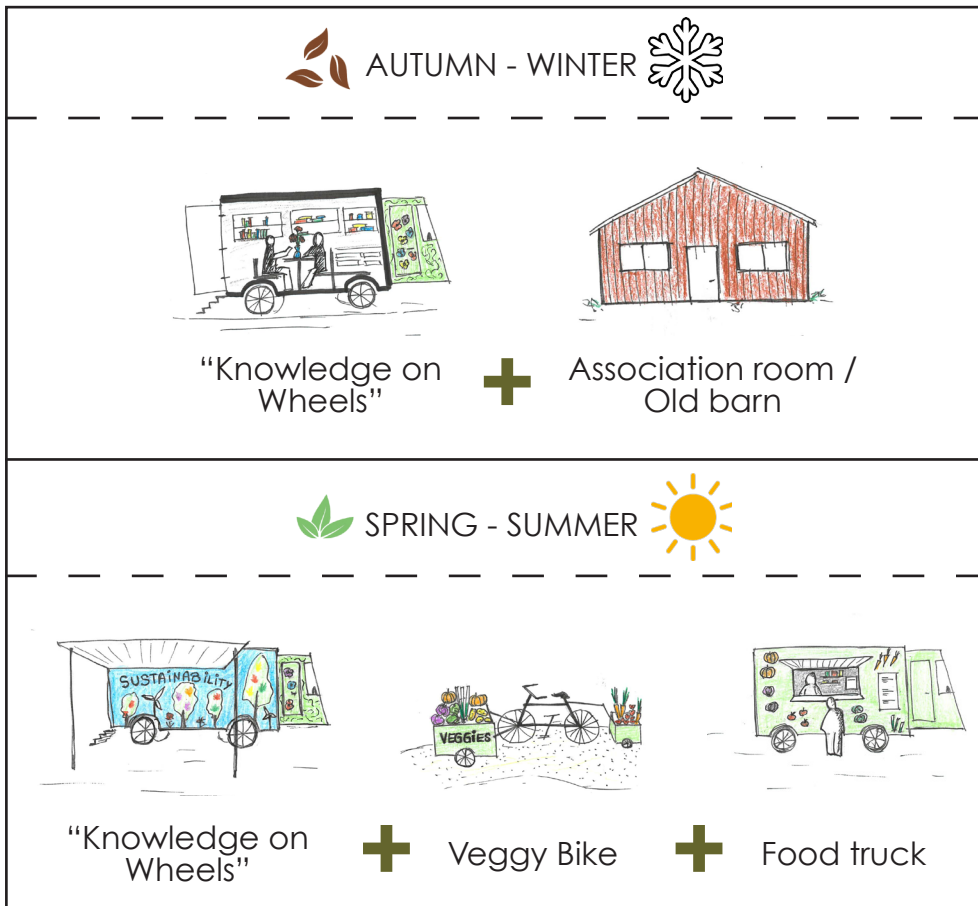
The local people contribute with their own interests, knowledge and skills to "Knowledge on Wheels"



Each part of Orust has its specific skills and qualities

# EVOLUTION IN SEVERAL STEPS

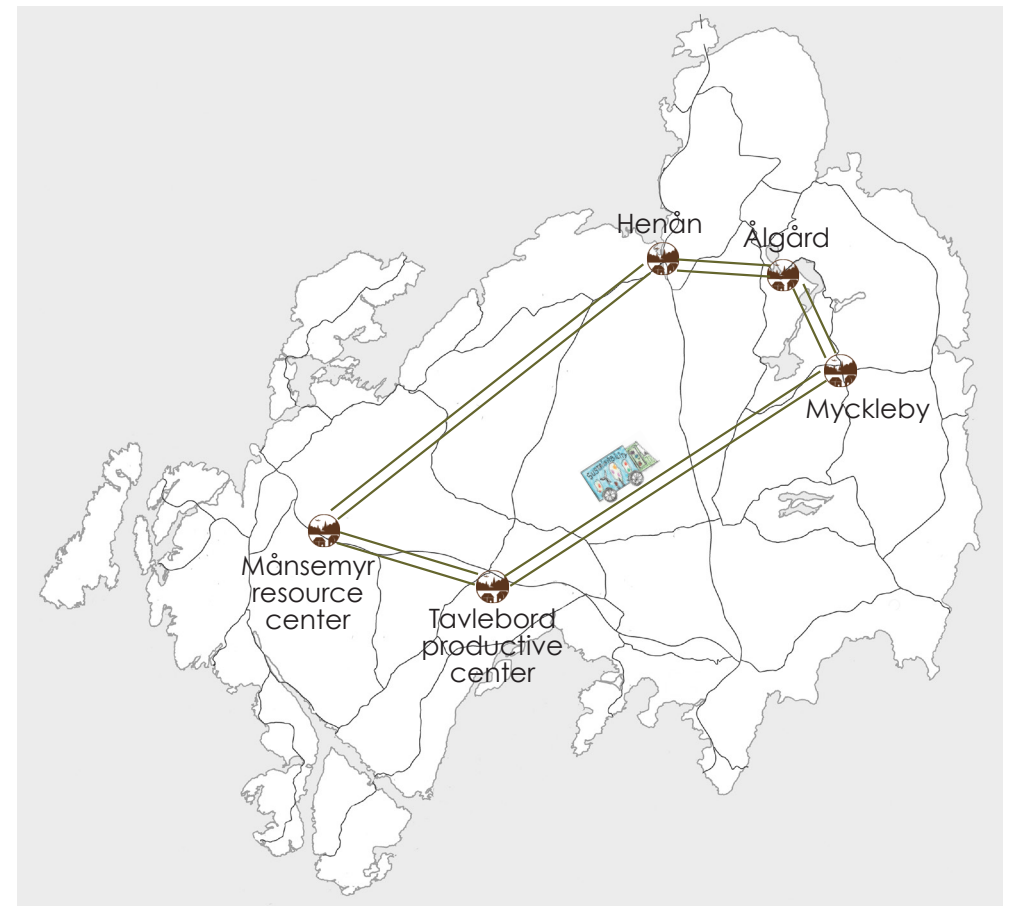
As "Knowledge on Wheels" will take place all year round, it needs to be adapted according to the seasons. The moving part, a converted fridge truck (has a better insulation) could be the minimal available indoor space. In some communities, an old barn or an association room can be used for the workshops and meetings during wintertime. For the summer, the activities can take place outside so the event can be expanded by adding a food truck, a cover in front of the truck, and even a Veggy Bike with fresh food from the "Tavlebord Productive Center".



Calendar of the seasons

At the beginning "Knowledge on Wheels" would only stop in places where the activities can take place in an indoor space. You can notice that it starts in the inland and not on the coast line, since we want to balance the large amount of activities already existing for the coastal communities and the lack of events in the center of Orust.

The project can start with a workshop to customize the truck in collaboration between local car mechanics and curious teenagers and adults. The necessary material can be acquired from the recycling centre or through donations from the car mechanic's workshops.



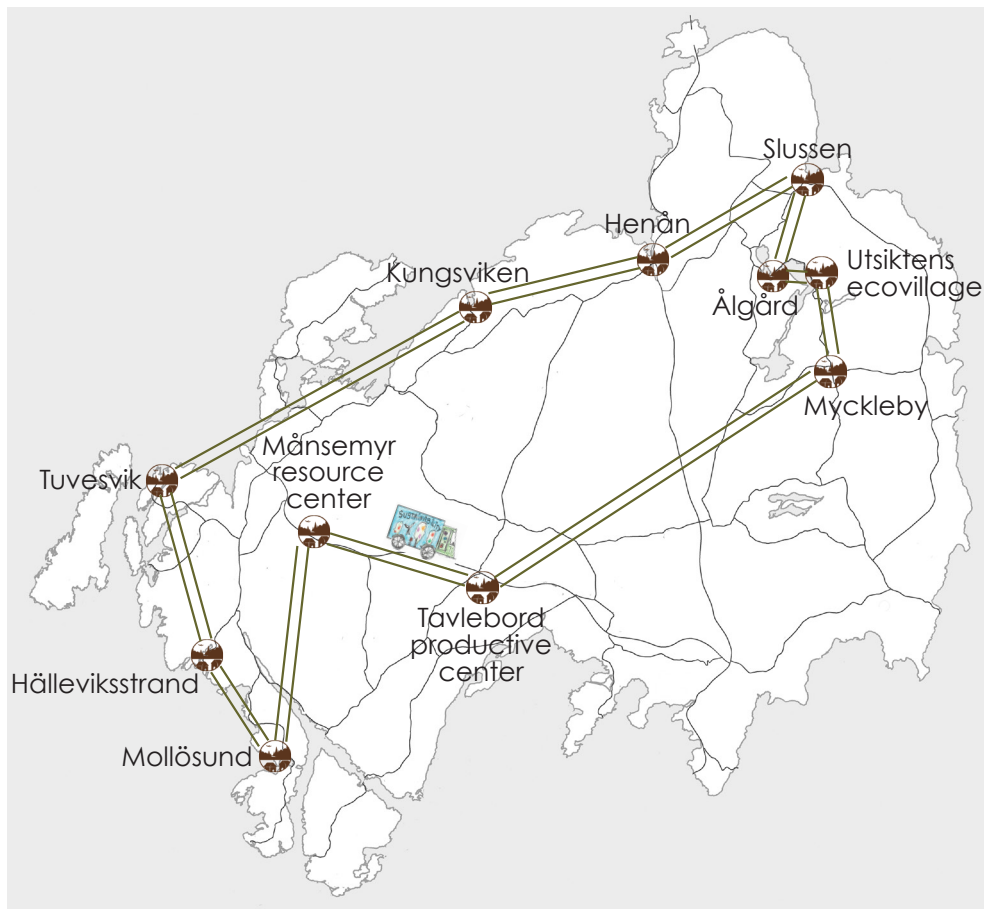
Phase 1

When more indoor spaces are becoming available in other communities, "Knowledge on Wheels" can extend its tour and reach more people of Orust. Since the coastal communities have less activities in the summer time it is important to involve them in winter program.

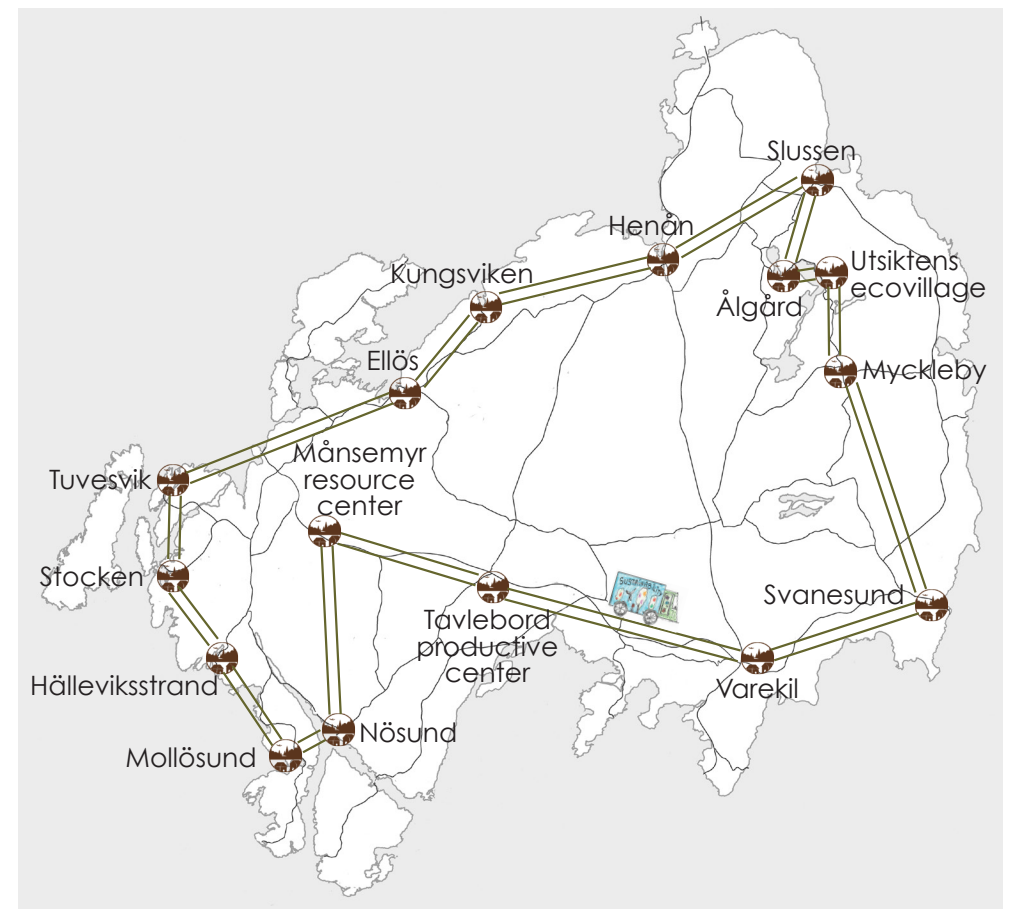
The costs of heating the indoor spaces are covered by the local communities, that host these activities. Fika is collected from "Tavlebord Productive Center". Furthermore, the truck is converted to run on biofuel.

After a few years, "Knowledge on Wheels" will become well-known on Orust with a lot of volunteers (also coming from Uddevalla or Gothenburg in summer time) and visitors from all over Sweden.

While the interest is growing, the project funding will be covered by the local community. Another truck can be converted, and customized, and even more activities can be offered. Since the plan of the municipality is to develop the bicycle paths, some activities will be moveable by bike, and food deliveries of the Tavlebord productive center could be done with the veggy bike.



Phase 2



Phase 3

# WHAT COULD HAPPEN THERE ?

Today "Knowledge on Wheels" is in Slussen! Musicians are playing the whole day! The food truck and the Veggy bike are selling products from the "Tavlebord Productive Center" and the furniture were built at the "Månsemyr Resource Center" with the kids from the Waldorf school! Everybody is part of the event!



Slussen



I want to help to build the boat too!  
I will ask Elsa what I could do!

Stocken



Of course! I want to learn how to fish like my grandfather!

Mollösund



We are a group of 5 pensioners, who are glad to meet regularly at "Knowledge on Wheels" events in wintertime. It is really practical, we don't need to take the car! We just go there with our fika! We read and discuss about new building or heating techniques, they help us to order food on the website of Orustmat. When I go home, I always call my daughter to share with her what I learned, because she doesn't have time to go there, but wants to be kept updated to have a more sustainable lifestyle.



Varekil

I'm painting the Earth on the truck, because we have to protect our planet and every resource on it!



Svanesund



Haha!

Eh Gustav, do you think we will find the ruins of an old castle ?

Olaf, the ruins aren't from a castle, you didn't listen !

I'm hungry, I will get an apple from the Veggy Bike.

Myckleby



# REFERENCES OF MOVING EVENTS AND ACTIVITIES



**TITLE** THE CONTINUOUS PICNIC  
**SOURCE** Bohn, K.; Viljoen, A.; Second Nature Urban Agriculture, designing productive cities, 2014, London, New York Routledge  
**LOCATION / TIME** London, UK / 2008 (one day event)  
**RELEVANCE** - workshops on different public squares & spaces to talk about urban food production & alternative use of public open spaces  
 - organised in the form of picnic of local products  
 - educational information of the products included its type, travelled distance & biodiversity where it was grown



**TITLE** SUSTAINABILITY FESTIVAL  
**AUTHOR / SOURCE** [www.sustainabilityfestivalunibz.wordpress.com](http://www.sustainabilityfestivalunibz.wordpress.com)  
**LOCATION / TIME** University of Bolzano, Italy / 2016 & 2017 (2 days event)  
**RELEVANCE** - raise awareness & involve participants to search for solutions that can be applied in their everyday lives  
 - lectures & workshops include Circular Economy, recycling farm for kids, permaculture & biodynamic agriculture, design for eco-social Change, urban garden & prototyping sustainable futures, social economy, community & food sovereignty, social sustainability



**TITLE** PROJECT BUNNY BUS  
**AUTHOR / SOURCE** (article) Rachel Ohm / Marti Stevens Learning Center  
**LOCATION / TIME** Maine, US / 2014 - ...  
**RELEVANCE** - students run project, started with converting old school bus into rabbit coop  
 - further plan is to add chickens, goats, sheep & ducks  
 - the bus doesn't have a working engine, but further plan is to have a moving project that can run all year round & bring hands-on education to communities  
 - other educational programmes students have started are aquaponics culture & livestock management



TITLE **FREIBURG SCIENTIFIC THEATRE**

SOURCE [www.scientific-theatre.org](http://www.scientific-theatre.org)

LOCATION / TIME Freiburg, Germany / 2012 - ...

- RELEVANCE
- taking discussion of sustainability to a new level by combining performance with complex scientific knowledge
  - using theatre to promote & facilitate inter-cultural dialogue on sustainability in the context of academic & public conferences, seminars, festivals & schools
  - performance is followed by discussion on sustainability with audience



TITLE **PROJECT TROM**

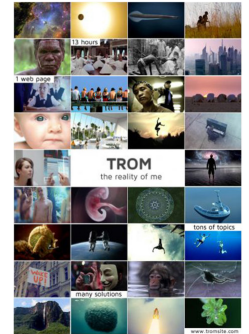
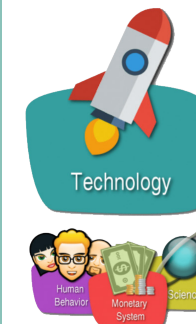
AUTHOR / SOURCE volunteers initiative / [www.tromsite.com](http://www.tromsite.com)

LOCATION / TIME online initiative / 2011 - ...

- RELEVANCE
- showcasing the root cause of most of today's problems & proposes realistic solutions to solve those
  - challenging people's values, explaining in simple language how the world works & providing free & good quality educational materials/tools for everyone
  - in collaboration with Understanding More making entertaining & educational spoken word videos & giving public lectures



QUIZ DOCUMENTARY



TITLE **TRUCK CONVERTED TO SHOP**

AUTHOR / SOURCE Mobile Office Architects / [www.mo-arch.com](http://www.mo-arch.com)

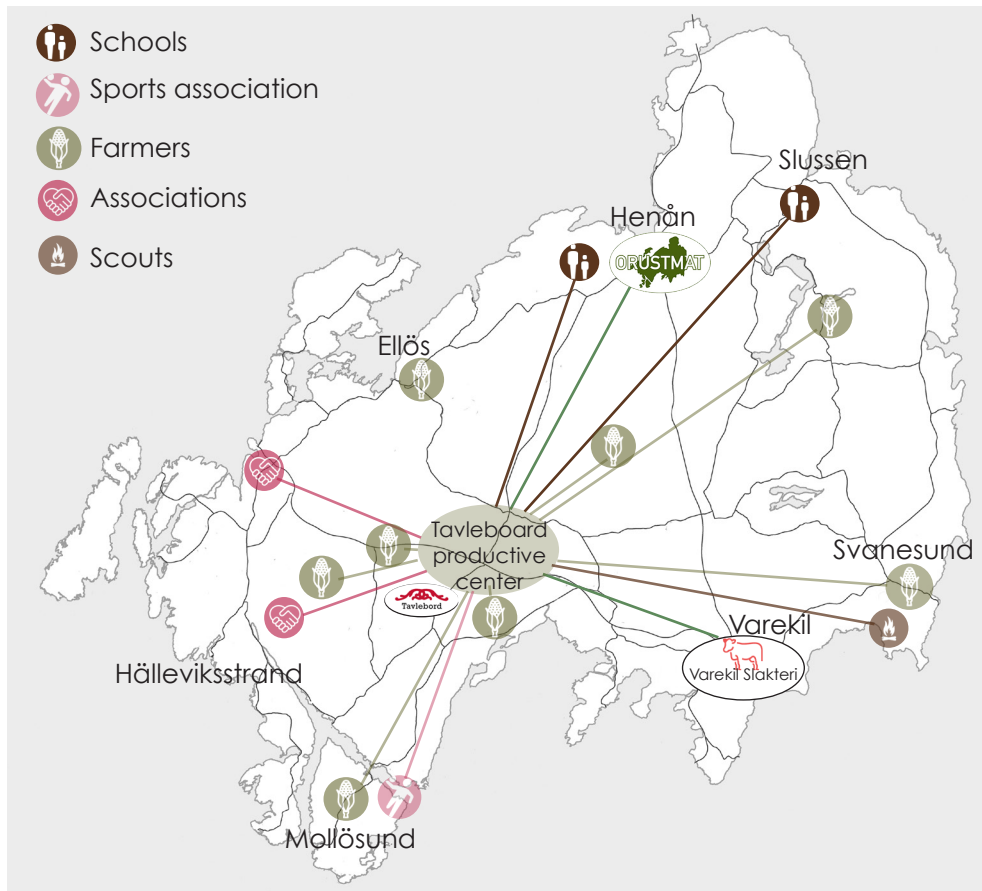
LOCATION / TIME mobile in US / 2015 - ...

- RELEVANCE
- built with four heated dressing rooms, foldout origami doors, built-in trays to hold the assortment & seating
  - custom-built steel frame, glass & wood walls, wooden floor
  - each piece is independently operable, allowing highly adaptable experience depending on the site, weather, capacity or type of event



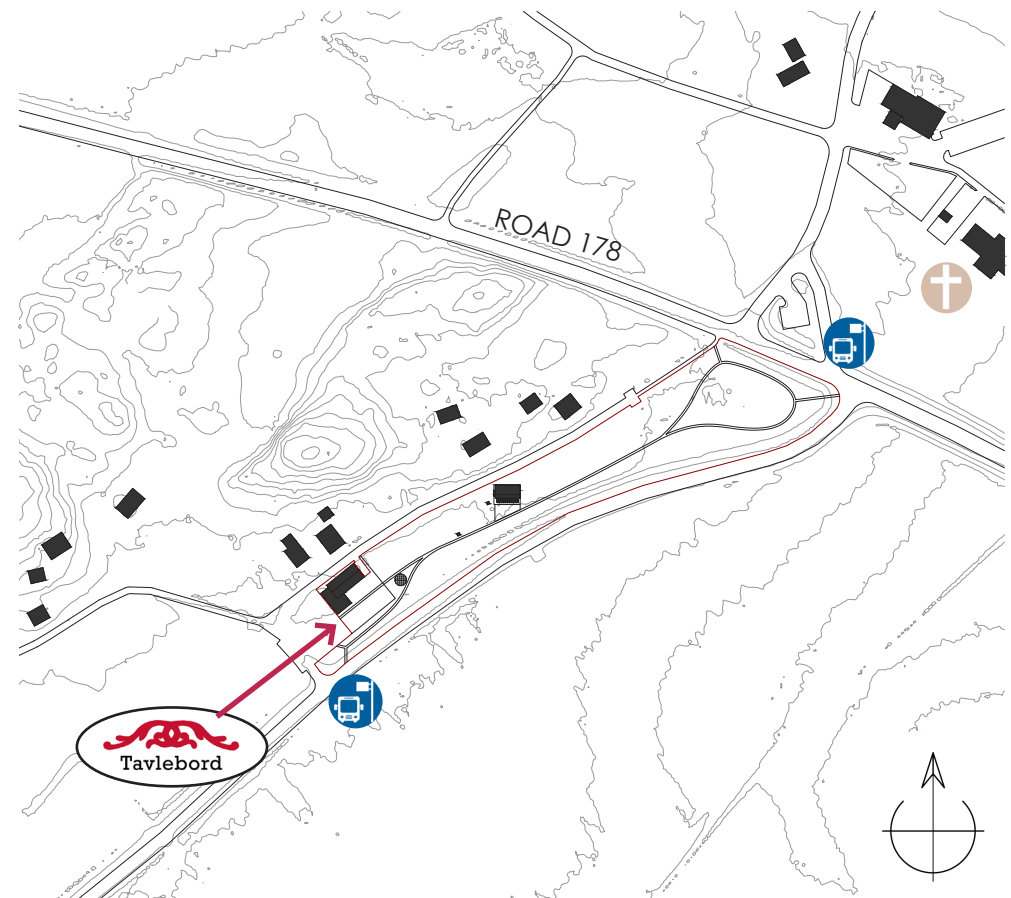
# TAVLEBORD PRODUCTIVE CENTER - Shared garden and gathering spaces

For a sustainable future, producing vegetables and fruits by ourselves is a way to reduce our carbon footprint. "Tavlebord Productive Center" aims to gather people around food, with the purpose to exchange skills and knowledge. There everyone has the possibility to grow and cook food together, learn about permaculture, food production in greenhouses, farming areas on Orust, and take care of animals. The aim is to provide an indoor space to give the possibility to meet people inside during winter. It might be connected to already existing food network and other active associations of Orust, since it has a strategic central location.



Possible links with existing networks

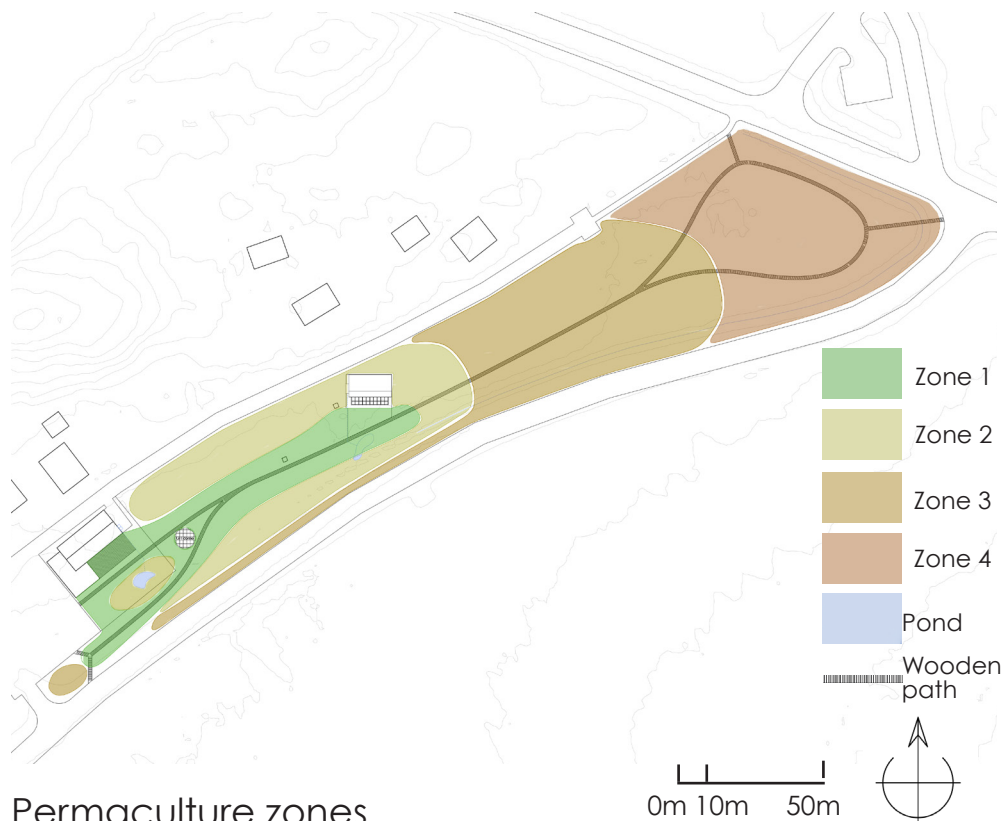
The choice to put it next to the Tavlebord Lanthandel has several reasons. First of all, it is already a well-known place for some inhabitants of Orust, because once a week it is a marketplace for local food. So people don't need to drive to another place. Our proposition is concerning food production, so a collaboration is possible with the Lanthandel if there are leftovers for example. Secondly, we wanted to offer a gathering place on the inland, to balance the difference between coast and inland. As the project encourages people not to build on arable land, we are proposing to use the fertile farming land of the site for permaculture.



Situation plan - Next to the Tavlebord Lanthandel, accessible by bus and by the road 178

The permaculture principles define the organization of the plot. The zone 1 consists of crops that need to be taken care of every day, like salads, kitchen herbs, greenhouse, etc. Zone 2 has plants that need regular tending twice a week, small animals and composting site. Zone 3 is for expansion plans and in the beginning used for wild crop, berry bushes and fruit trees. Zone 4 is for the noise protection of the summertime traffic.

The main walking path starts from the parking lot and from the Tavlebord Lanthandel garden. It brings people to the community gathering place, passing by the greenhouse dome. So zone 1 is logically along this path, which will be used daily, surrounded by zone 2. Continuing through the whole plot, the path goes through the fruit forest in the last zone. Secondary paths are created as they are needed according to the plantation.



Permaculture zones

Investment for the first phase has to be done by the municipality, which can apply for EU and governmental funds. It can also be supported by crowdfunding. In the best case Tavlebord Lanthandel is interested to invest as well.

At first acquiring the plot, materials, seeds and tools is going to be quite expensive. Some building materials should be recycled via the "Månsemyr Resource Center" to reduce the quantity of new wood needed for the carpentry.

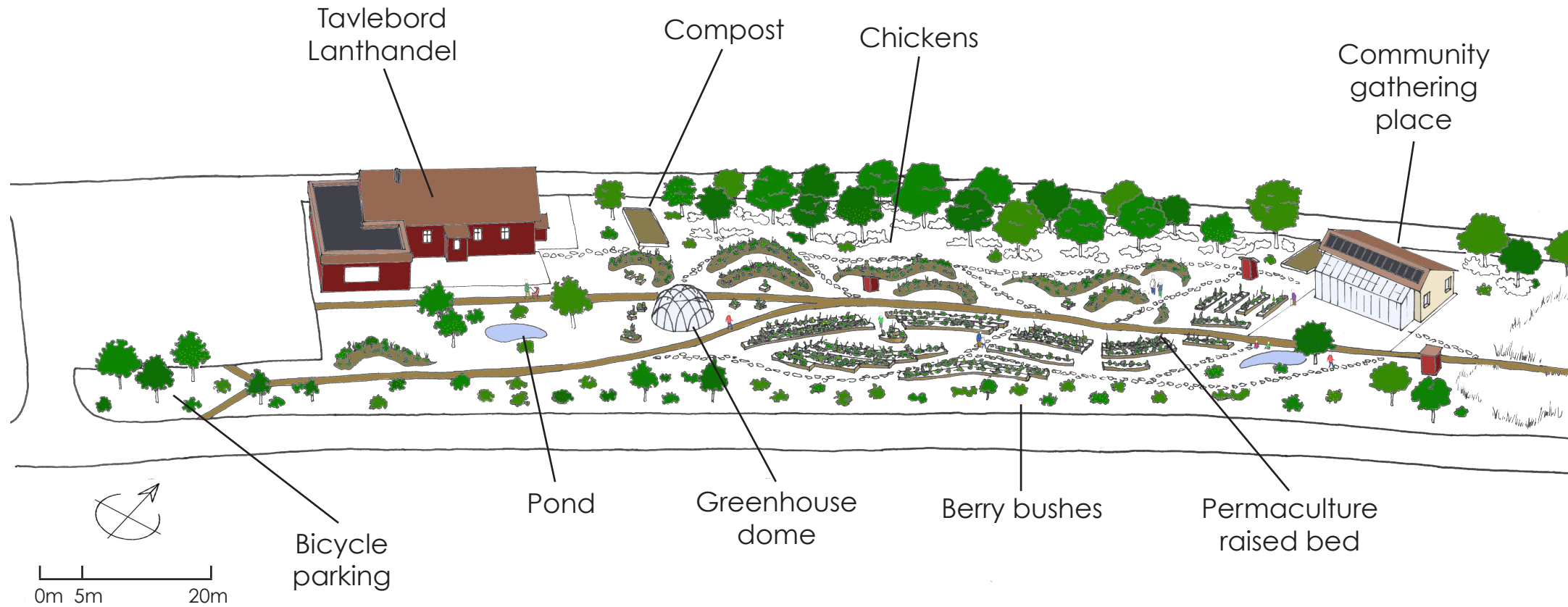
As the aim of the project is to involve the inhabitants as much as possible, a campaign to promote the contribution of everyone is needed. To reach as many people as possible and encourage them to bring something to help, for example tools which are not needed anymore, surplus of seeds, some furniture, and time to help for the construction and the preparation of the plot for the permaculture usage.

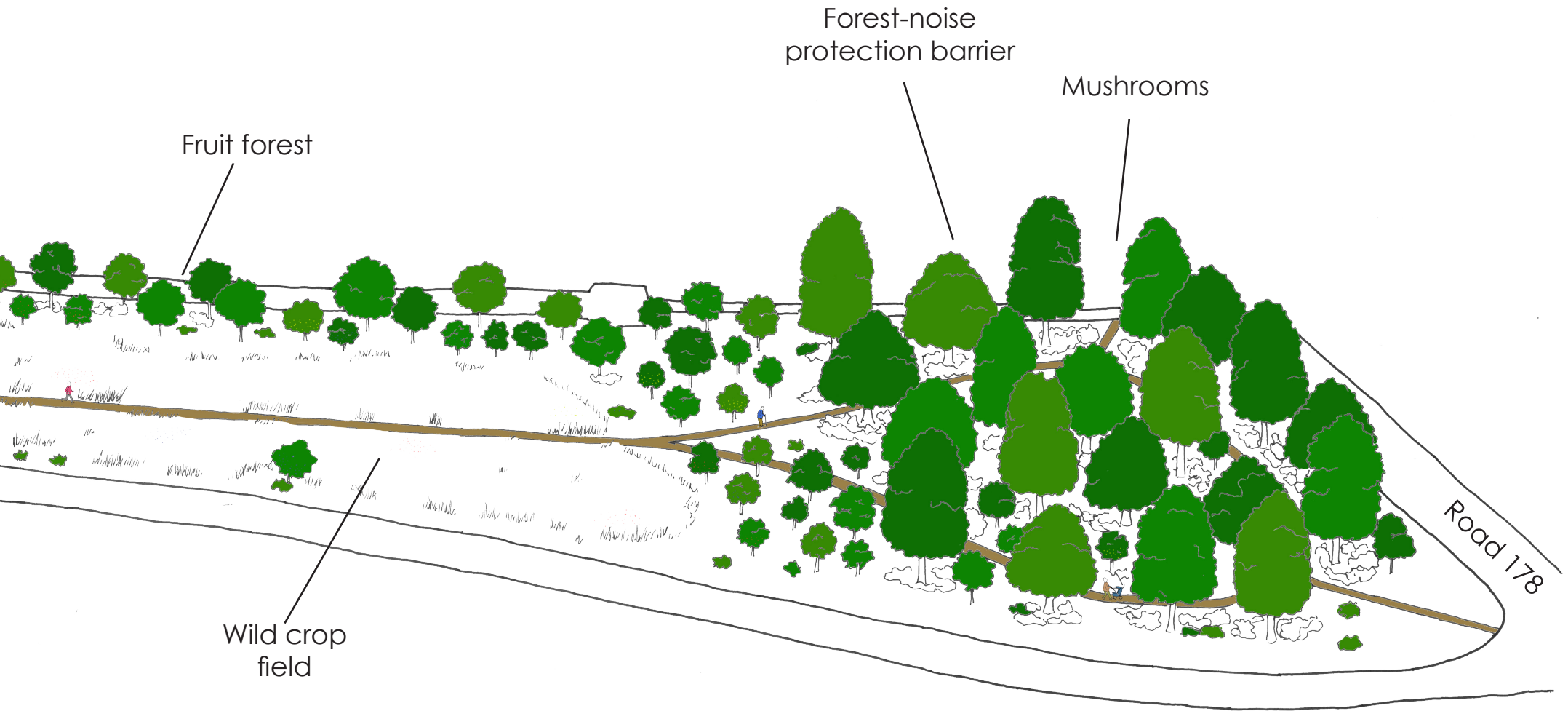
Once the first investment is done the place can sustain itself. The energy needed for electricity in the kitchen is produced by solar panels on the roof. The room is heated by a rocket stove. The indoor temperature is comfortable all year round. As the gathering place is built with straw bales and the greenhouse attached to the building is facing south, that provides a good inertia and makes it comfortable. The sink and the toilets are supplied by rainwater collected in a tank next to the building.

The overproduction of vegetables and fruits can be sold to Tavlebord food market and other food markets over Orust. This money can be used for maintenance and buying new tools.

If the interest is growing, the site will need to be expanded. This could be financed by savings from food sales and by people's investment (optional membership). Once Inhabitants use and get attached to this place they can participate in its further expansion.

# AXONOMETRIC VIEW - PHASE 1





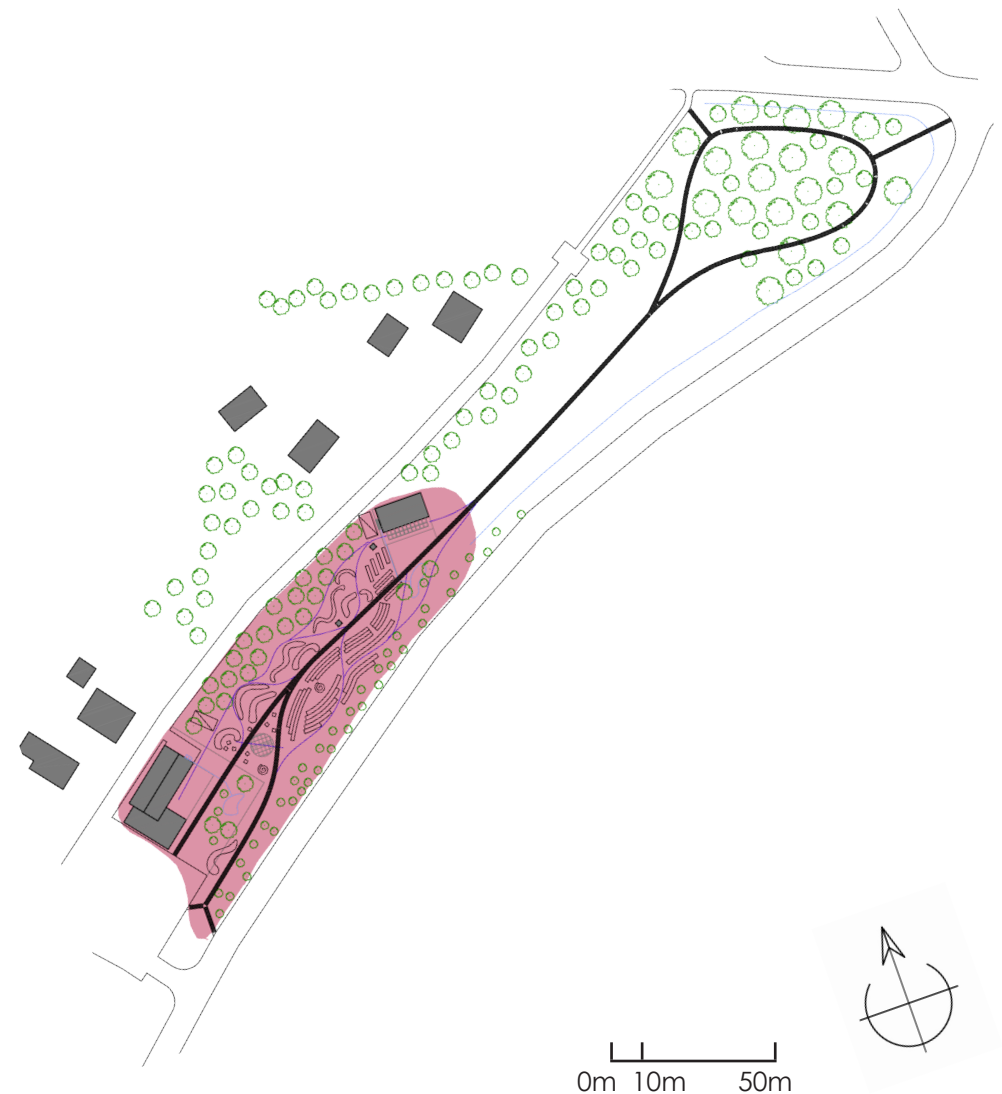
# EVOLUTION IN SEVERAL STEPS

This project can also be developed in several steps according to the needs and motivation of the people involved. The first phase includes the community gathering place with the greenhouse, the greenhouse dome and the permaculture area in between. The first building consists of a community kitchen and a place with a library where people can relax, socialize with each other and read about permaculture. Some trees need to be planted in the beginning of the project at the end of the plot as they work as a protection from the noise from of heavy traffic from road 178. Some chicken could also be part of the first phase close to the composting area.

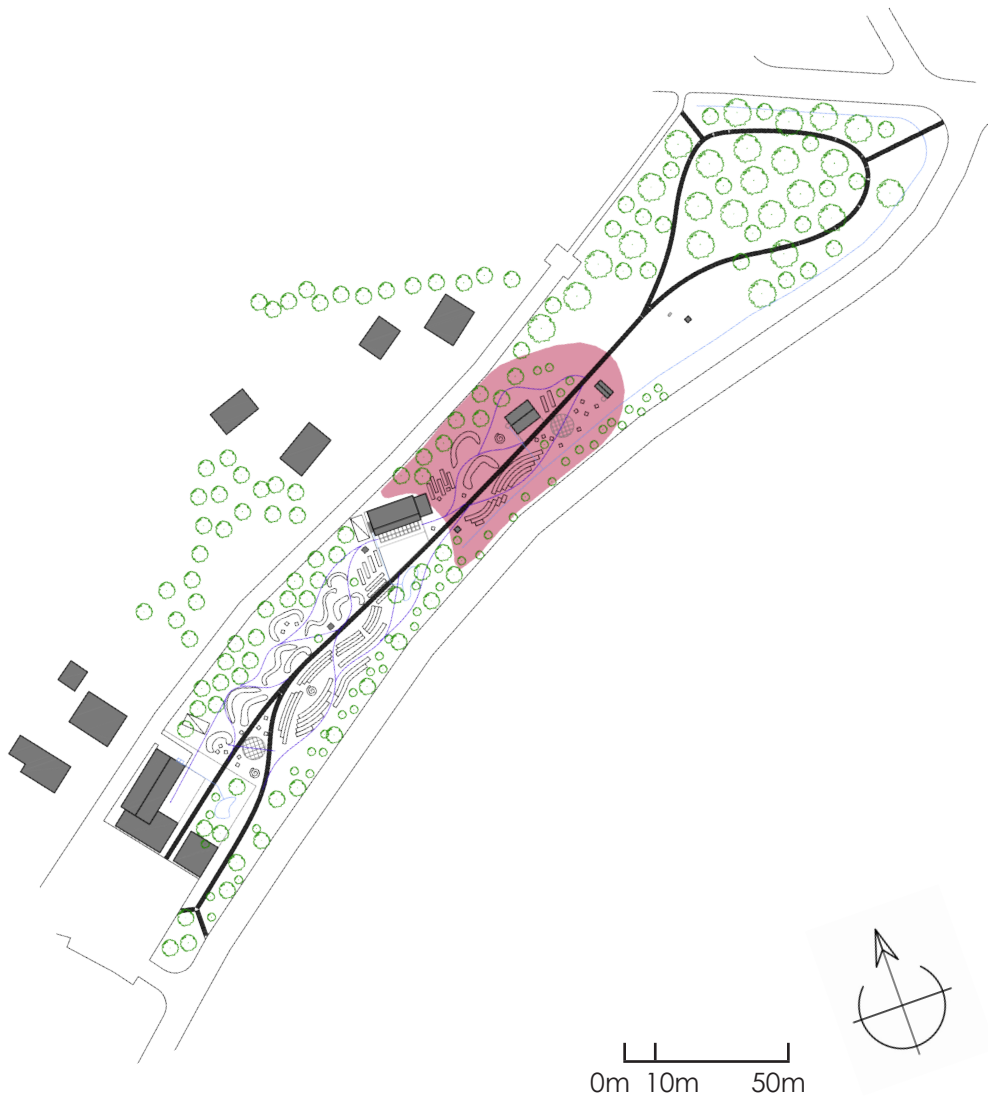
In the second phase, the plantation of the permaculture zone 1 and 2 can be extended along the wooden path. Shelters for tools or animals can be built. The fruit forest will grow more and more each year and more bushes can be planted on the side of the plot. The secondary paths evolve with the raised beds of the permaculture.

In the last phase, the whole plot is following the permaculture principles. More greenhouse domes can be built using recycled materials from the "Månsemyr Resource Center". And maybe another gathering place will be needed to greet more people at the same time. The building of new structures and shelters are part of the educational purpose of the project and should be done with the local people, children and as a summer activity for tourists. It is a way to balance the gap between the permanent and the seasonal residents and create a feeling of belonging to the place.

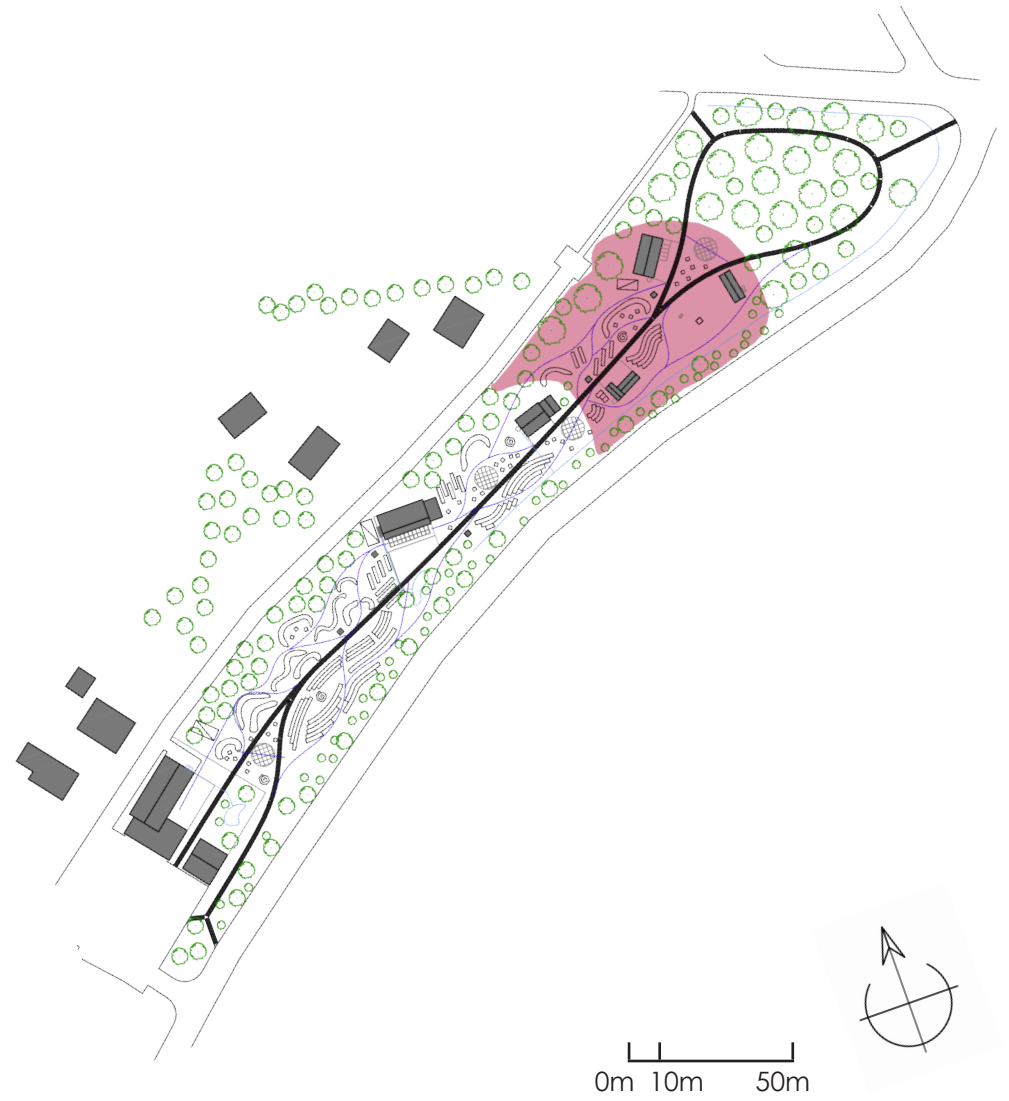
We propose these steps, but it is up to the people involved to decide of the speed of development and the number of phases. They have the power to decide, what they need further on. The first step is more detailed on the axonometric view on the page before, to have a more concrete idea how it could work and what it could offer.



Phase 1

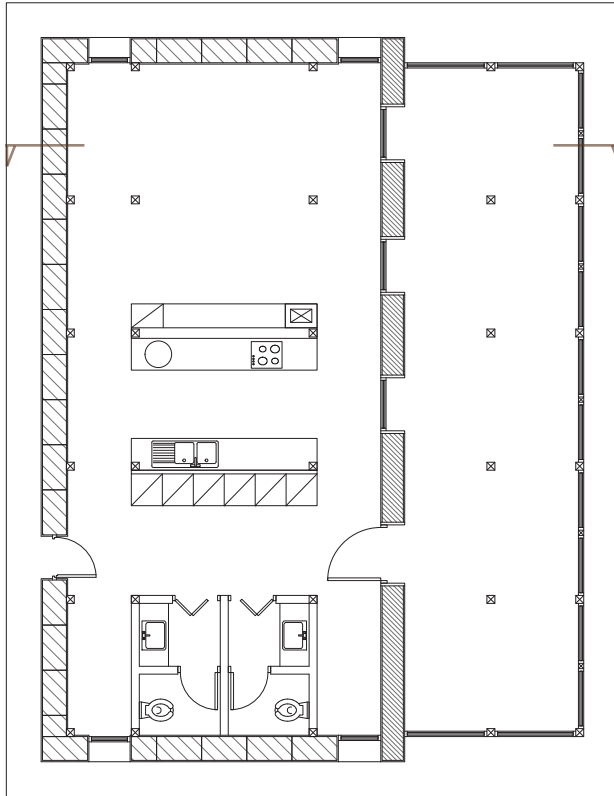


Phase 2



Phase 3

# WHAT COULD HAPPEN THERE ?



Community gathering place - Floor plan



The gathering building in the middle of the garden, is built with straw bales, and a rammed earth wall to the greenhouse on the south side.

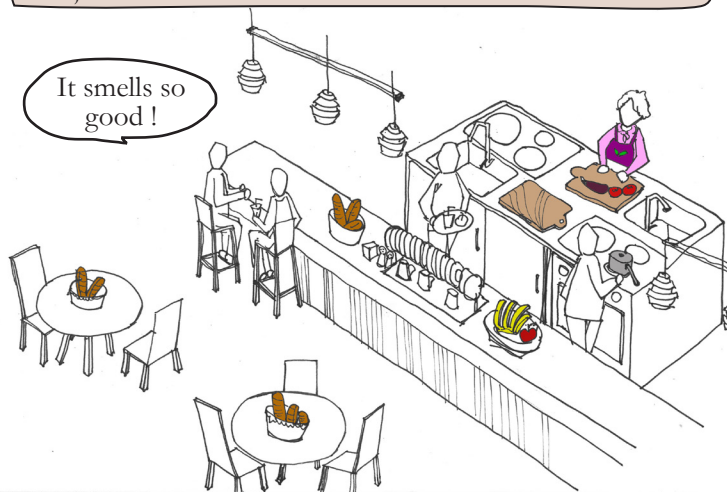
That's an unusual shape for a greenhouse, what are the advantages of a dome, Edgar?

Well, there are a lot of reasons. It needs less material, because of the geometry. The shape also allows more sun, since it doesn't cast strong shadows. The structure is very light, so it is easy to assemble with a few people. The sheets are made of recycle polycarbonate. It is 100% recyclable!

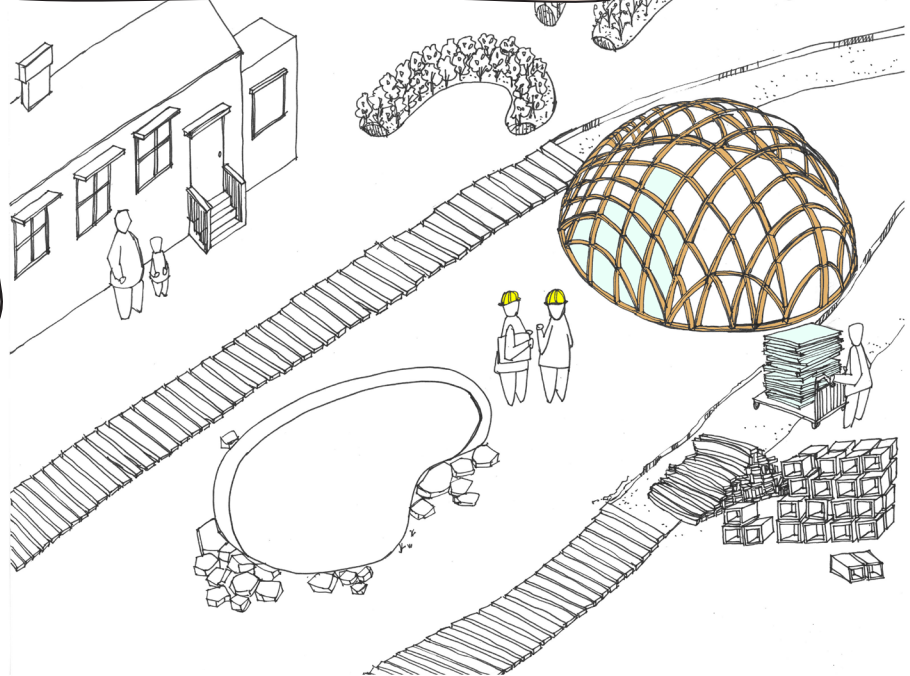
I heard that there are already a lot in Denmark and also one in Stockholm!

Tomatoes and raspberries are already ripe! Today some people came together to collect them and prepare a meal and jam!

It smells so good!



Today the greenhouse dome is being built. The recycled material were prepared at the "Månsemyr Resource Center" and brought here with cargo bikes.



Meanwhile, Gustav's grandparents have a rest in the greenhouse, enjoying the smell of beautiful plants and the nice temperature due to the rammed earth wall.

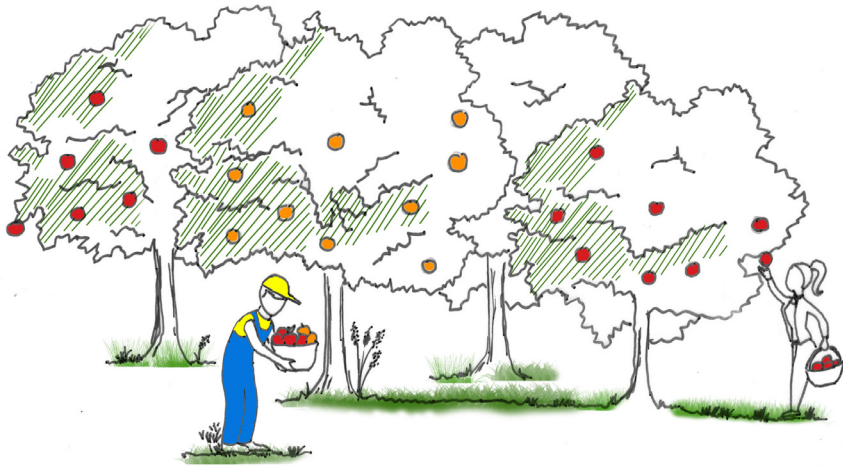


Community gathering place - Section

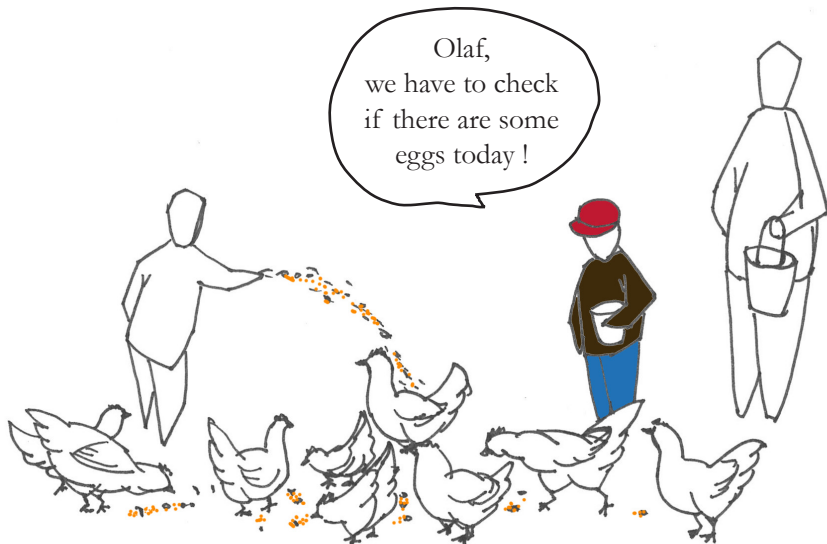




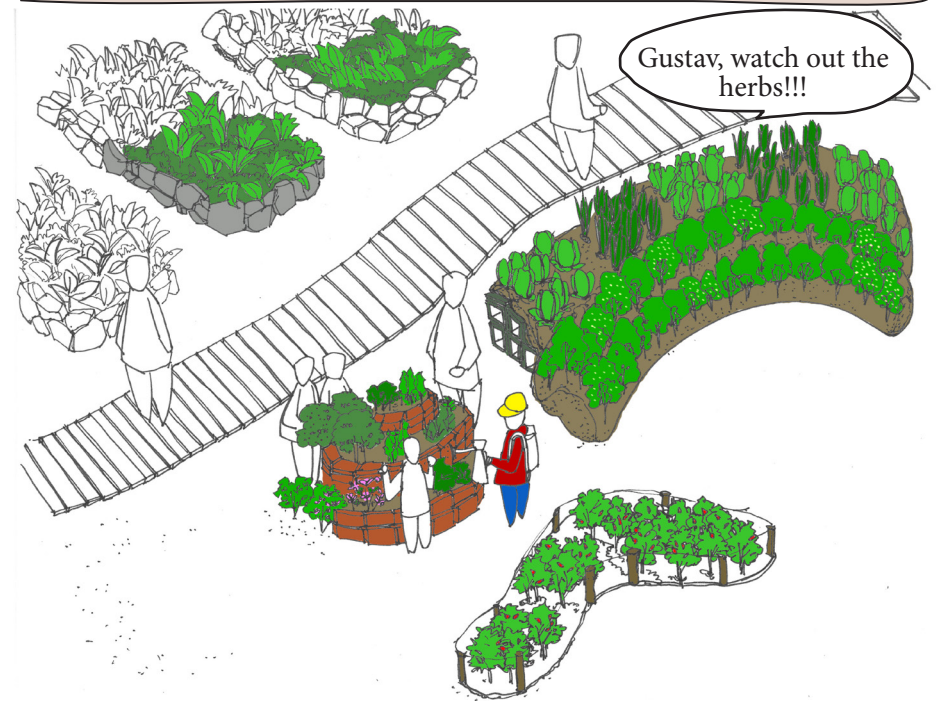
“Don’t forget to put a hat on!” my grandfather always reminded me as I was running to the corridor to get the hat with the red ribbon before the others, as it was my favorite. With my hat on and basket on shoulder, I ran to the apple trees at the end of the garden.



I returned to grandfather to show him the apples I had picked proudly... I still remember this red color matching my hat and the smell of fresh fruits! We ate them all right away with my friends throwing the core in the compost next to the chickens and fetched some seeds to feed them.



Crossing the beautiful flowers - like an explosion of colors. Rushing through the smelling basil, lavender, thyme, ... I almost fell in the little pond. I didn't want to miss watering the salads with friends! We just planted them last week with our class.



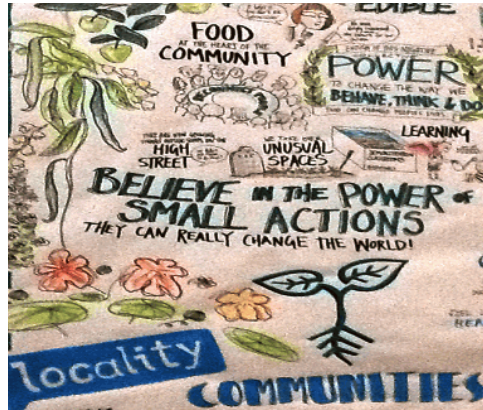
At the same time, my mother and brother in the back of the garden...



# REFERENCES OF GARDEN PROJECTS/NATURAL CONSTRUCTION MATERIALS



- TITLE **BYHAVN 2200**  
 AUTHOR / SOURCE garden association / [www.byhaven2200.dk](http://www.byhaven2200.dk)  
 LOCATION / TIME Copenhagen, Denmark / 2012 - ...
- RELEVANCE
- inspired by [www.permacultureprinciples.com](http://www.permacultureprinciples.com)
  - run by volunteers, open access to public at any time
  - garden design & building events, growing, permaculture, composting & seed workshops
  - involving local community's & homeless people
  - local community kitchen waste composting system
  - social events like building pizza oven, book swapping cupboard, seed exchange, outdoor kitchen, etc



- TITLE **INCREDIBLE EDIBLE**  
 AUTHOR / SOURCE Mary Clear / [www.incredible-edible-todmorden.co.uk](http://www.incredible-edible-todmorden.co.uk)  
 LOCATION / TIME Todmorden, England / 2007 - ...
- RELEVANCE
- community building through festival, cooking courses
  - teaching small scale commercial food growing & marketing skills to young people
  - aquaponic, hydroponic & traditional techniques
  - partnership with local high school to provide education & locally produced food
  - volunteers driven non-profit company, income from donations & guided tours



- TITLE **VERMONT COMMUNITY GARDEN NETWORK**  
 AUTHOR / SOURCE community association / [www.vcgn.org](http://www.vcgn.org)  
 LOCATION / TIME Vermont, Canada / 2001 - ...
- RELEVANCE
- funded by grants, foundations & memberships
  - diverse of yearly programmes of Garden Teaching
  - hands-on garden education for youth & adults
  - training, technical assistance, resources & networking opportunities for garden leaders
  - impact: children eat healthy, friendly & supportive community, awareness of environmental issues, providing fresh, affordable fruits & vegetables

TITLE **GEODESIC DOMES**

AUTHOR / SOURCE Atelier Kristoffer Tejlgaard / [www.domeofvisions.se](http://www.domeofvisions.se)  
LOCATION / TIME Sweden, Denmark / 2012 - ...

- RELEVANCE
- invented by Buckminster Fuller in 1940's
  - the geometry assures minimal material use, facade made of recycled polycarbonate sheets, structure made of wood, includes ventilation system
  - durable, light weight, quick & easy to assemble
  - facade is fully transparent & has UV-protection layer
  - 100% recyclable alternative to traditionally glazed greenhouses & garden pavilions



TITLE **STRAW BALE BUILDING TECHNIQUE**

AUTHOR / SOURCE Frans Yzermans & Lena Falkheden  
LOCATION / TIME Bohuslän, Sweden

- RELEVANCE
- low cost, 100% biodegradable, renewable locally sourced material, modularly expandable, doesn't require highly skilled & experienced building team
  - good insulation value, good humidity regulation & fire resistancy when combined with indoor clay render
  - creates healthy & safe indoor climate
  - can last over 100 years
  - surplus resource



TITLE **RAMMED EARTH BUILDING TECHNIQUE**

SOURCE Gernot Minke / more info: [www.gernotminke.de](http://www.gernotminke.de)  
LOCATION / TIME Kassel, Germany / built in 1993 - ...

- RELEVANCE
- low cost, 100% reusable, locally sourced material, doesn't require highly skilled building team
  - good humidity regulation
  - creates healthy living environment
  - low-tech solutions like rammed earth, adobe, clay plaster & the "earthen-sausage" system
  - in our project earthen bricks wall is used for its thermal mass properties as interior wall behind rocket stove



# MÅNSEMYR RESOURCES CENTER - Shared materials and working spaces

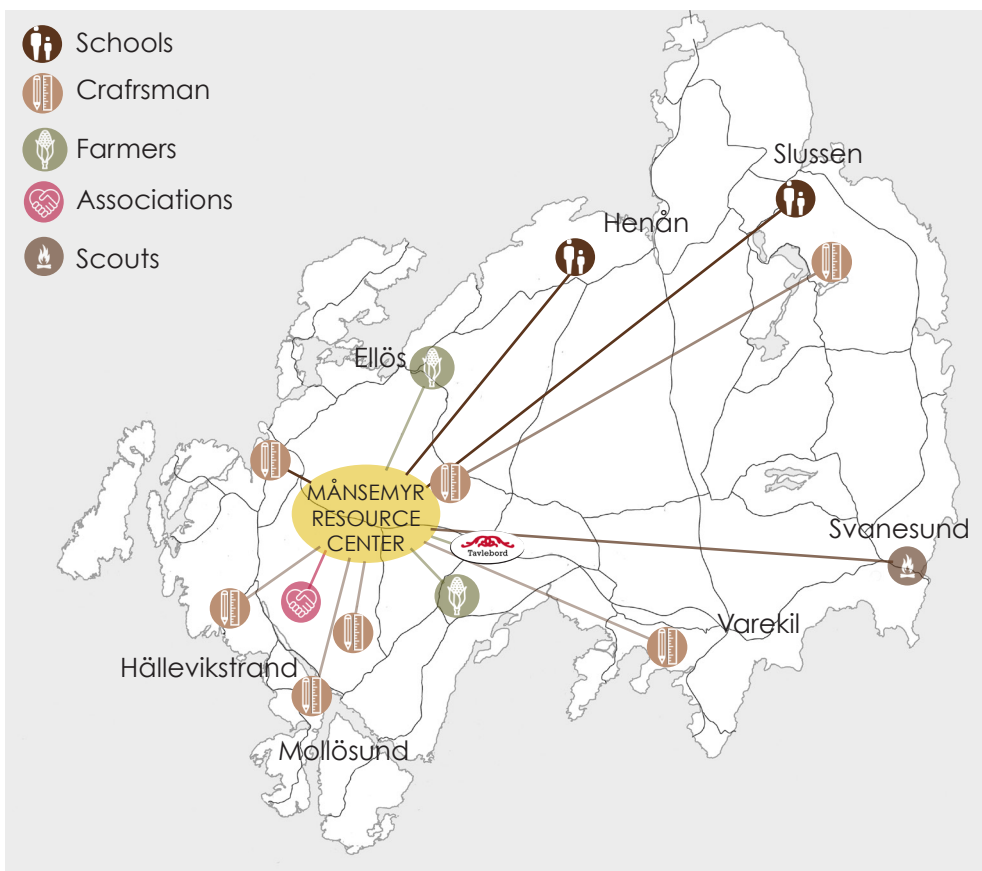
*"Everything must go somewhere. There is no "waste" in nature and there is no "away" to which it can be thrown"*

Adapted from Barry Commoner, The Closing Circle, 1971

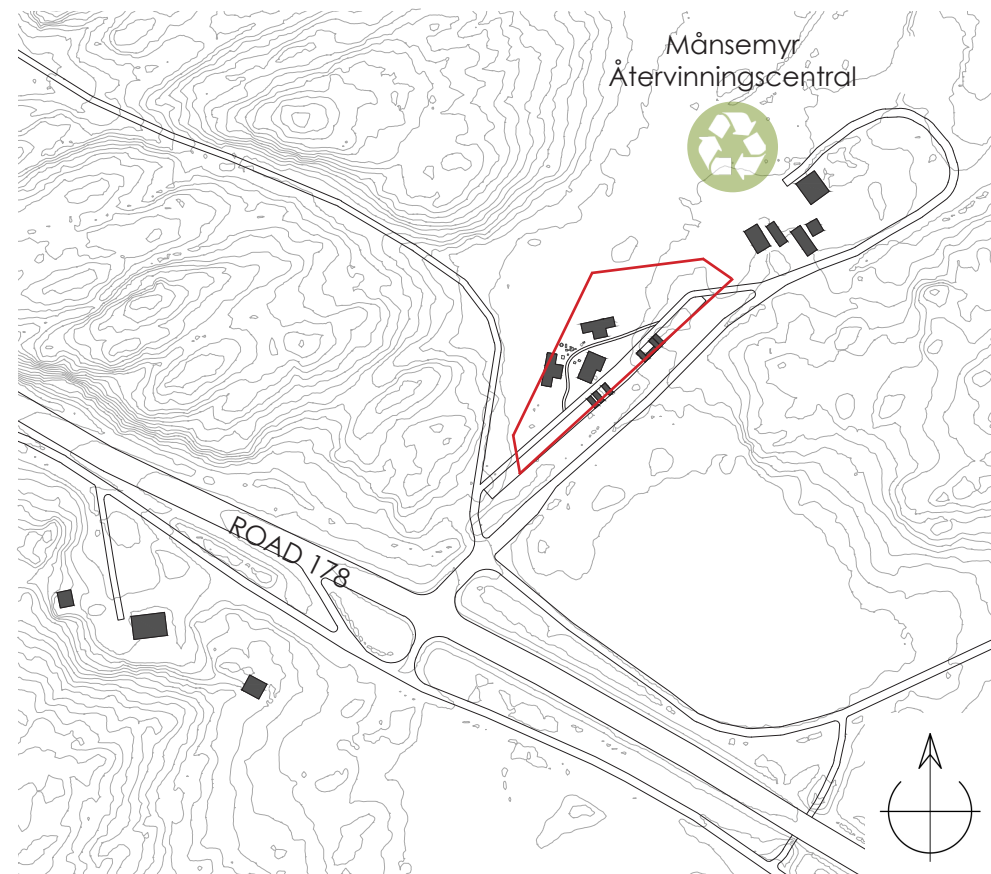
For a sustainable future, we need to reduce our production of waste. The "Månsemyr Resource Center" is a place to learn more about possibilities of reusing or up-cycling materials and objects. The main building and small workshops are examples of sustainable building techniques, using reused wood, straw bales, rammed earth, hempcrete, etc.

We have chosen to locate the "Månsemyr Resource Center" just outside the Månsemyr recycling station to create a material loop avoiding resources to become waste. Another reason is waste regulation: if something is at the recycling station it is waste, and can't be used any longer.

From the Road 178 the entrance to the Månsemyr recycling station and the "Månsemyr Resource Center" is the same. The road splits in two parallel streets to give access to the resource loop and meet again at the Månsemyr recycling station, if you still have waste to give up, or return on Road 178.

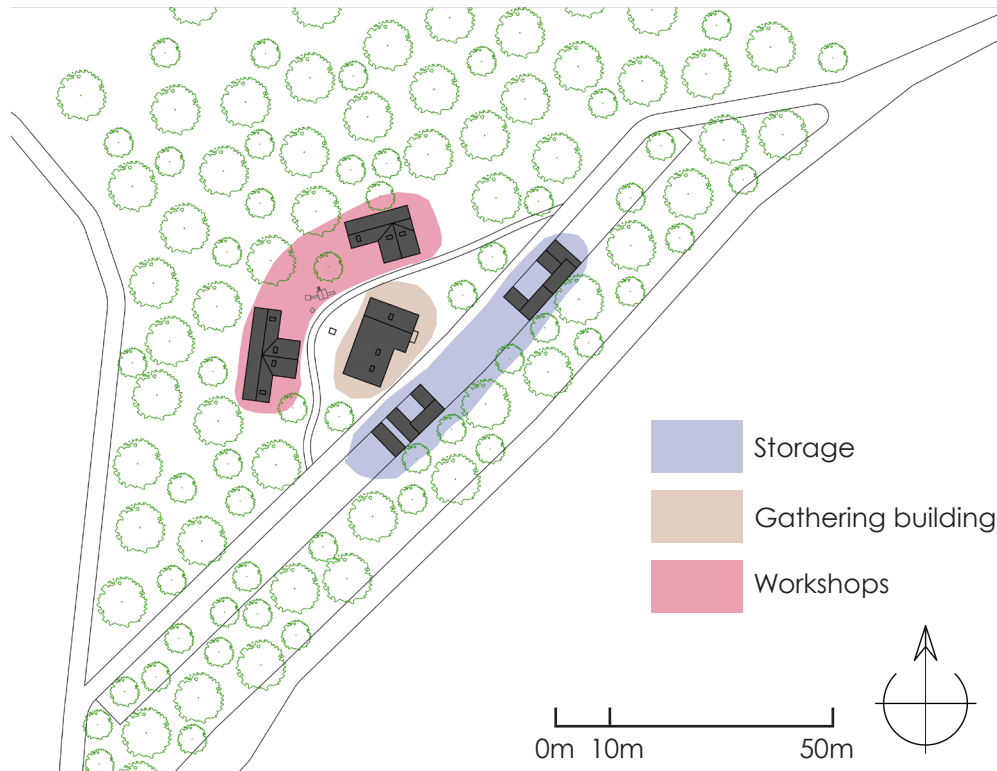


Possible links with existing networks



Situation plan - A loop before the recycling center to reduce waste

When you arrive at the "Månsemyr Resource Center" you drive along the **storage containers** on the right and park in front of the **main building**, which is the only two-stories high. A person in charge of the center has an office there for the reception and registration of incoming objects and material categories. You will be helped with finding storage, it is organized according to the materials in the different containers. The wood **workshops** have free access to everyone to work on an individual or group project, to help others or just to observe and learn. The main building has also a library to learn more about different techniques, a kitchen and a place to gather for around 30 people. Between the cabins is a playground for children and an outdoor working space.



Organisation in three different zones

The "Månsemyr Resource Center" development is linked to the Månsemyr recycling center development. The plan for the recycling center expansion can include acquiring a plot for the "Månsemyr Resource Center".

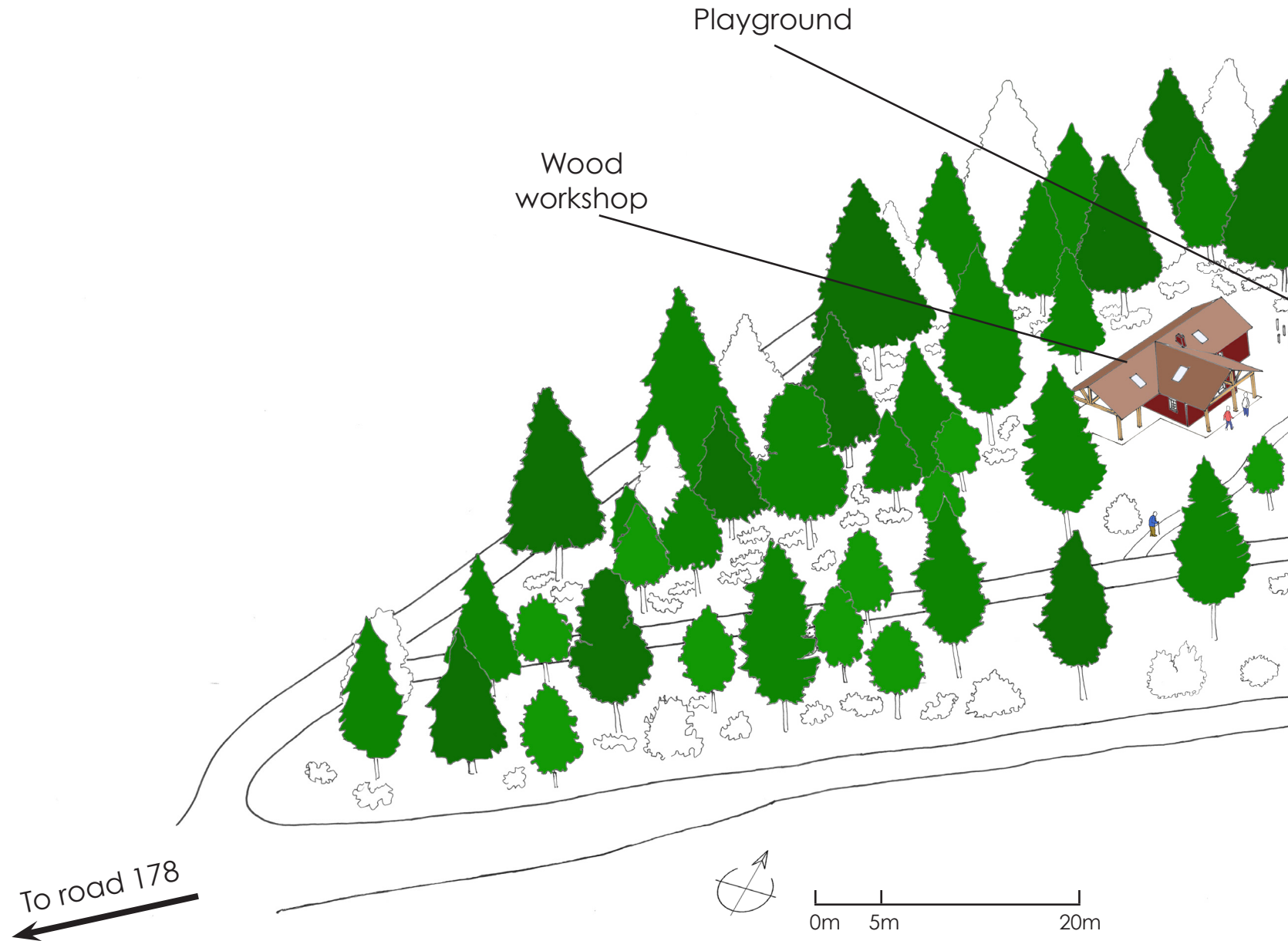
The initial investment is going to be costly. The first stage should include building the common meeting place (straw bales, wood that cannot be acquired through garbage collection). It should be built using as much reused materials as possible for windows, insulation, etc. The investment should include the storage containers, the structural framework for the workshops and some furniture and some machines for the workshops.

Starting up the project could be funded by the Månsemyr recycling center (Municipality of Orust), Kretsloppsakademi, crowdfunding, EU and governmental funds. To run the place, one or two employees would be needed to help inhabitants sorting and storing their materials. This person can be part of the recycling center organisation or Kretsloppsakademi.

The new materials that end up in the "Månsemyr Resource Centre" are price tagged and sold 50 : 50 (material owner : resource centre). For re-selling the materials you need to pre-register their materials online with pictures of the materials, in exchange you will receive the exact location to store your material on site. (This opens up the potential for "online marketplace" so people can see the live feed of resources that can be bought from the centre.) The earned money can be used to expand the activity, buy new machines, build the workshops, buy new storage space and pay employees.

For this project we propose the association and person to run the place, because during our research we met several interested people. From the Månsemyr recycling center, and from the Kretsloppsakademi, some people had already thought about a similar project. Therefore it gives hope for the future of these ideas.

# AXONOMETRIC VIEW - PHASE 1





Plastic workshop

To Mansemyr recycling center

Community gathering place

Storage containers

# EVOLUTION IN SEVERAL STEPS

In the "Månsemyr Resource Center" project several steps are possible and needed since the interest will grow over time. In the first phase some storage is needed. For this we propose the use of containers as it allows the expansion or reduction according to the needs. The main building is needed for the organisation and as the meeting place which is the core of NeighBORUST's project. The construction of this building should be an open event to involve people to learn how to build with straw bale, as well as the construction of the two workshops to learn how to build with wood. For the start these two could be a wood workshops, to work on furniture or to prepare building materials. In addition, a plastics workshop to build the greenhouse dome in the "Tavlebord Productive Center".

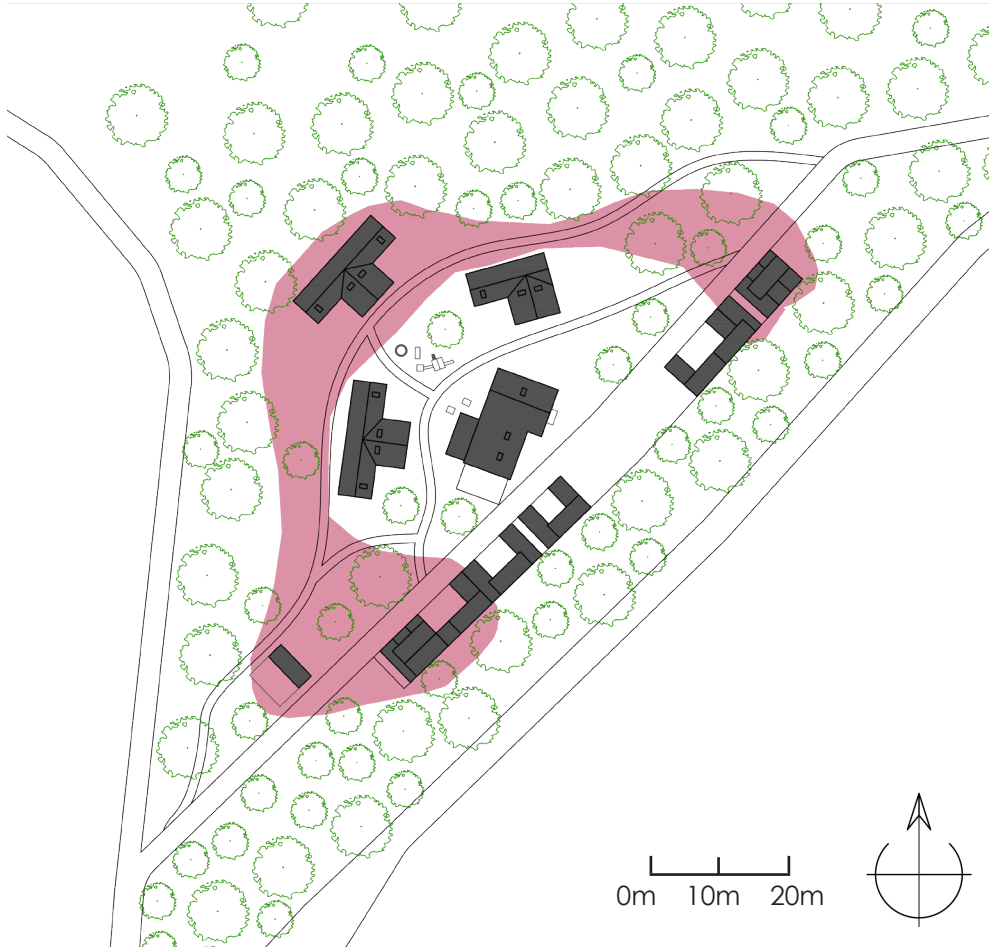
In the first phase, the workshops have more floor and roof surface than needed. According to the needs, and demands, the workshops can be expanded by enclosing some of the prebuilt structures (see an example plan on the next pages). Once everything is closed, or if another workshop is needed, a new one can be built along the path, or next to a new path ring. The storage grows along the road by piling more containers.

In the last phase, the whole line on the right side of the road could be filled with containers in continuous 140 meters. If more are needed they can also be placed between the workshop cabins to be closer to the working spaces. The main building can be expanded when more offices are needed as more employees run the place and more people want to get involved in the project and more school classes are coming to learn about building techniques, etc.



Phase 1





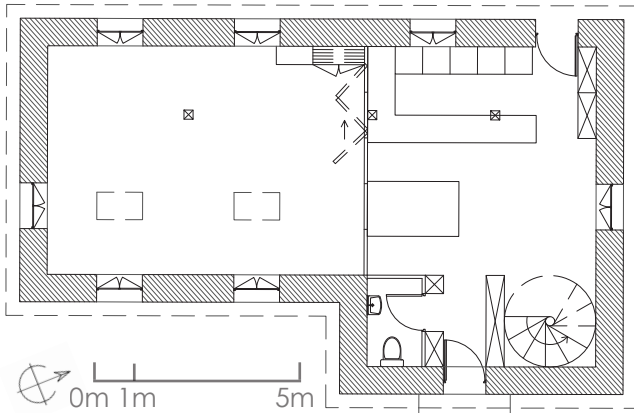
Phase 2



Phase 3

# WHAT COULD HAPPEN THERE ?

As the building won't be used during the whole day and not always for 30 people, a movable wall can divide the space in two smaller rooms, which need less energy to be heated.



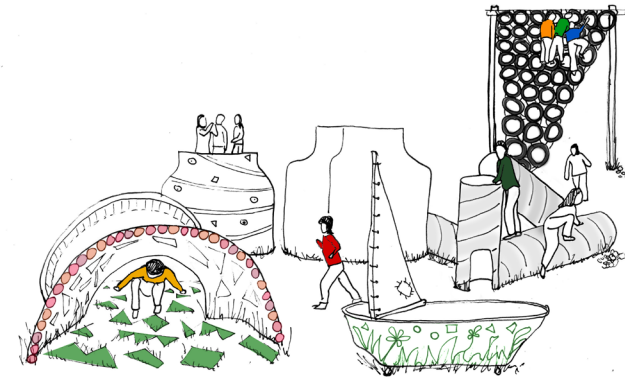
Gathering building - Floor plan

The space on the ground floor can be used for gathering for discussions or for fika. Today, with one of my colleagues we planned a school trip to this new place on Orust : the "Månsemyr Resource Center". One of the employees offered to explain children how to build a chair. They were all very excited, and it was really interesting. I heard, that many went back there with their parents to continue the work.

Next time we will learn how to build tools for gardening. Because we are going to visit the "Tavlebord Productive Center" in spring.



I really like the "Månsemyr Resource Center"! There is so much choice, so many different kinds of wood! It looks like a buffet!!

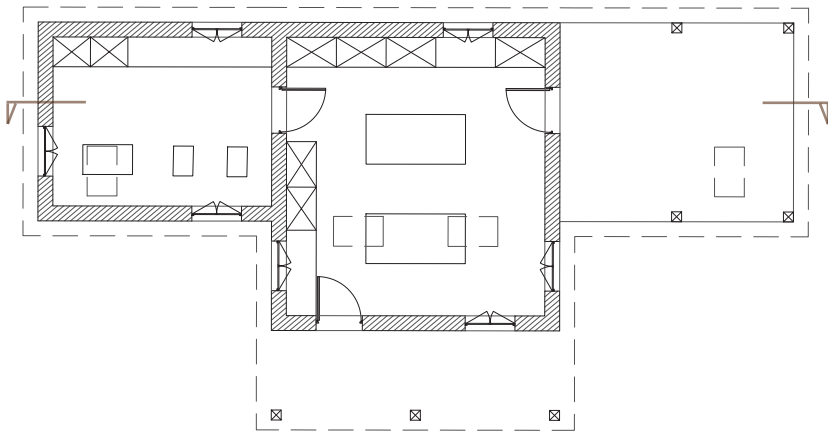


This bathtub boat is so cool! So much better than the plastic slides Mummy! Can we do the same with ours at home!?

In the meantime, on the first floor in the library where you can learn new building techniques by yourself or understand the harmfulness of current building practices.

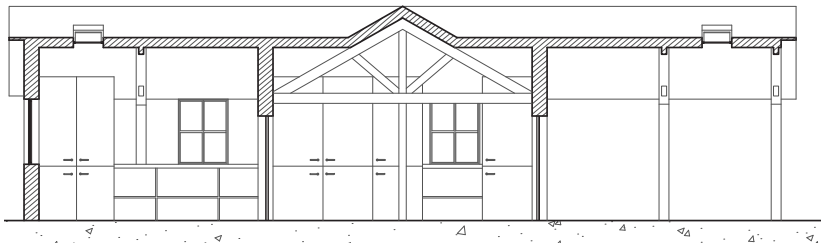


Gustav did you know that concrete needs so much sand and water?! The beaches in the world are shrinking and it affects the seashore life! We have to change that!



Workshop - Floor plan

At the beginning, the workshops aren't completely built. When more working space is needed, only the walls have to be built, the roof and floor is already there, as you can see it on the right side of the section.



Workshop - Section

Today is a workshop day at the "Månsemyr Resource Center"! A new workshop for sewing and handcrafts has to be built, because a lot of people on Orust want to repair and sew their own clothes. It is built with straw bales and everybody can help!

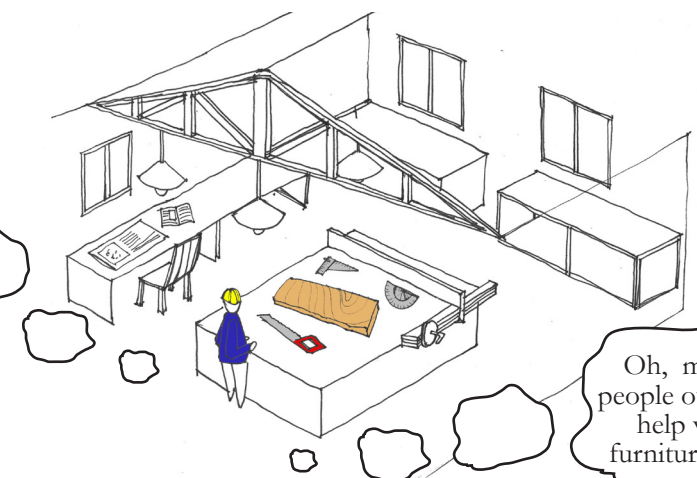
Me and my husband are very interested to learn sustainable building technique, because we already bought a plot to build our own house next year on Orust.



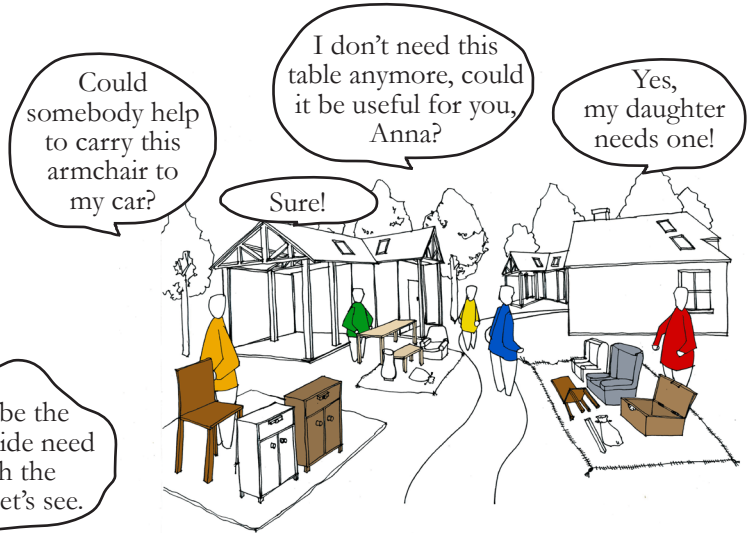
We have lived here for one year already, in the rental apartment in the ecovillage. Before we came we heard so much about the new sharing and meeting places from my parents who come here during the summer.

Straw is a wonderful material! We used it in the "Tavlebord productive center". The community gathering place is enjoyable in winter and in summer, don't need to be heated so much, it looks good and we can build it ourselves!

So, I need to grab a plank of wood for the table and also for the chairs. It will look very nice with different kinds of wood, the final design depends on what I find in the storage containers. I can store my work in the cabinet under the windows.



Oh, maybe the people outside need help with the furniture, let's see.



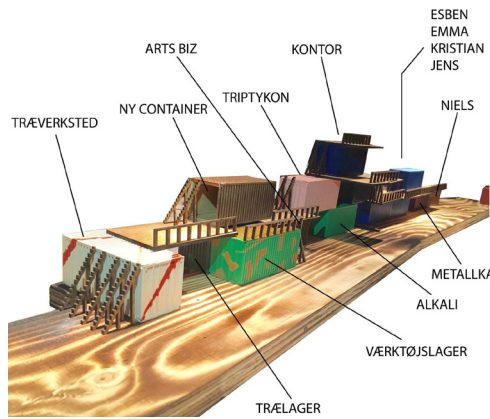
Could somebody help to carry this armchair to my car?

I don't need this table anymore, could it be useful for you, Anna?

Yes, my daughter needs one!

Sure!

# REFERENCES TO UPCYCLING, SHARING, EDUCATIONAL, COMMUNITY BUILDING PROJECTS



TITLE **CONTAINERBY**  
 AUTHOR / SOURCE Bureau Detours / [www.detours.biz](http://www.detours.biz)  
 LOCATION / TIME Copenhagen, Denmark / 2014 - 2017

- RELEVANCE
- building experimentation & social entrepreneurship
  - metal, wood, etc workshops built in cargo containers
  - community involvement: permaculture garden, chickens, public educational events
  - building workshop & gardening for school kids
  - cargo-bicycle designing & building
  - built with recycled materials, has rainwater collection
  - run by group of people in charge of workshop spaces



TITLE **INSTITUT FOR (X)**  
 AUTHOR / SOURCE Bureau Detours / [www.detours.biz](http://www.detours.biz)  
 LOCATION / TIME Aarhus, Denmark / 2009 - ...

- RELEVANCE
- culture, business, education platform arising from citizen initiatives & run by non-profit association
  - located on municipal development land, legal contract until development plans are being realised
  - public outdoor spaces & frequent public events
  - rentable workshop rooms built in cargo containers
  - organised through neighbourhood meetings where everyone is accountable to minimise administration



TITLE **REUSE AARHUS**  
 AUTHOR / SOURCE Aarhus Municipality / [www.reuseaarhus.dk](http://www.reuseaarhus.dk)  
 LOCATION / TIME Aarhus, Denmark / 2015 - ...

- RELEVANCE
- innovative space for recycling, upcycling & progressive waste management through informing, inspiring & example projects
  - exhibitions, events and educational courses on waste & recycling
  - free to pick up items, free to send re-usable goods
  - upcycling workshops for kids & grownups
  - run by volunteers

TITLE **LES GRANDS VOISINS**

AUTHOR / SOURCE Plateau Urbain & others / [www.lesgrandsvoisins.org](http://www.lesgrandsvoisins.org)  
LOCATION / TIME Paris, France / 2015 - (2020)

- RELEVANCE
- temporary contract on development land, site of a former hospital
  - diverse group of users (tourists, youth, residents, artists)
  - educational & cultural venue with cafe, restaurant, bakery, permaculture garden, up-cycle & repair courses, exhibition, shared kitchen, art gallery, monthly market, weekly concerts, etc
  - rentable artists workshops & office spaces



TITLE **RE-CREATE TAIPEI PLAYGROUND**

AUTHOR / SOURCE City Yeast & others / [www.cityyeast.com](http://www.cityyeast.com)  
LOCATION / TIME Taipei, Taiwan / 2016 (for World Design Capital 2016)

- RELEVANCE
- design & planning process involved site selection, material collection & community engagement
  - made of locally found, discarded materials
  - for example water tank labyrinth is covered in a bubble wrap, astroturf, has chalkboard surface & tree bark
  - for example swings made from discarded street lamps & car tires



TITLE **STREETBANK**

AUTHOR / SOURCE founder Sam Stephens / [www.streetbank.com](http://www.streetbank.com)  
LOCATION / TIME worldwide / 2010 - ...

- RELEVANCE
- neighbourhood sharing website
  - share things & skills, lend or give away goods you don't need any more
  - helps to build community spirit through meeting the neighbours & building personal relations
  - funding based on membership
  - members are saving in personal expenses
  - the more users, the bigger is the sharing bank

**streetbank**  
share things with your neighbours





Now the tools are in your hands!